

AGENDA FOR BOARD OF DIRECTORS  
AUBURN SCHOOL DISTRICT NO. 408  
Monday, July 28, 2014

- I. TIME AND PLACE
  - 1. 7 p.m. at the James P. Fugate Administration Building
- II. ROLL CALL
  - 1. Roll call of board members
- III. PLEDGE OF ALLEGIANCE
- IV. AUDIENCE PARTICIPATION
  - 1. Written communications
  - 2. Scheduled communications
  - 3. Unscheduled communications
  - 4. Community groups and organizations
- V. LEGISLATIVE UPDATE
- VI. SCHOOL PROGRAMS AND STUDENT ACHIEVEMENT
  - 1. Spring 2014 district assessment report
  - 2. 2013-14 end-of-year student achievement dashboards
- VII. PERSONNEL
  - 1. Certificated and classified personnel report
  - 2. Approval of salary schedule
- VIII. BUILDING PROGRAM
  - 1. Evergreen Heights Elementary School modernization project
  - 2. Auburn High School network integration project
  - 3. Auburn High School modernization and reconstruction project
  - 4. Auburn High School-work in progress report
- IX. FINANCE
  - 1. Vouchers
  - 2. Financial statements
- X. DIRECTORS
  - 1. Approval of minutes
  - 2. Administration updates
  - 3. Discussion
  - 4. Executive session

## LEGISLATIVE UPDATE

The board will discuss legislative items.

## SCHOOL PROGRAMS AND STUDENT ACHIEVEMENT

1. Spring 2014 District Assessment Report

Rodney Luke, associate superintendent of technology and career and college, will introduce Julie DeBolt, director of assessment and NCLB, who will present the end-of-year 2013-14 DIBELS and MAP district assessment results. This presentation aligns with the Auburn School Board 2013-14 Stated District Goals, Standard IV ("hold school district accountable for meeting student learning expectations"); Goal 3 ("monitor student achievement for standards on a regular basis utilizing achievement dashboards with the goal of an overall 5% decrease in at-risk performance and an overall 5% increase in on-target performance at every level in reading and math"). Ms. DeBolt will answer questions from the board.

2. 2013-14 End-of-Year Student Achievement Dashboards

Julie DeBolt will present the 2013-14 student achievement dashboards including middle school acceleration, grade 9 credits earned, high school honors enrollment, advanced career and technical education program enrollment, and high school advanced placement program enrollment. This presentation aligns with the Auburn School Board 2013-14 school year stated district goals, Standard IV "Hold school district accountable for meeting student learning expectations" Goal 3, Goal 5, and Goal 6. Ms. DeBolt will answer questions from the board.

2013-2014 Auburn School District  
Dynamic Indicators of Basic Early Literacy Skills  
Spring 2014 Report

		Index	Grade K DIBELS FSF							Index	Grade K DIBELS PSF							Index	Grade 1 DIBELS NWF							Index	Grade 1 DIBELS ORF						
			Count				Percent				Count				Percent				Count				Percent				Count				Percent		
			AR	MR	OT	Total	At Risk	Moderate Risk	On Target		AR	MR	OT	Total	At Risk	Moderate Risk	On Target		AR	MR	OT	Total	At Risk	Moderate Risk	On Target		AR	MR	OT	Total	At Risk	Moderate Risk	On Target
Am Indian	Fall 2013	1.63	18	5	7	30	60.00%	16.67%	23.33%	N/A							2.48	2	7	12	21	9.52%	33.33%	57.14%	N/A								
	Winter	2.71	1	6	21	28	3.57%	21.43%	75.00%	2.82	2	1	25	28	7.14%	3.57%	89.29%	2.63	3	1	15	19	15.79%	5.26%	78.95%	2.05	7	4	8	19	36.84%	21.05%	42.11%
	Spring	N/A				0				2.81	2	1	24	27	7.41%	3.70%	88.89%	N/A								2.11	5	7	7	19	26.32%	36.84%	36.84%
Asian	Fall 2013	1.99	38	4	37	79	48.10%	5.06%	46.84%	N/A							2.62	11	11	65	87	12.64%	12.64%	74.71%	N/A								
	Winter	2.50	11	17	50	78	14.10%	21.79%	64.10%	2.47	13	15	50	78	16.67%	19.23%	64.10%	2.74	7	8	69	84	8.33%	9.52%	82.14%	2.67	8	12	64	84	9.52%	14.29%	76.19%
	Spring	N/A				0				2.67	5	16	58	79	6.33%	20.25%	73.42%	N/A								2.73	8	8	73	89	8.99%	8.99%	82.02%
Black	Fall 2013	2.10	25	11	32	68	36.76%	16.18%	47.06%	N/A							2.20	22	23	39	84	26.19%	27.38%	46.43%	N/A								
	Winter	2.59	10	9	51	70	14.29%	12.86%	72.86%	2.53	10	13	47	70	14.29%	18.57%	67.14%	2.57	15	7	64	86	17.44%	8.14%	74.42%	2.33	24	10	52	86	27.91%	11.63%	60.47%
	Spring	N/A				0				2.71	6	8	56	70	8.57%	11.43%	80.00%	N/A								2.35	20	12	48	80	25.00%	15.00%	60.00%
Hispanic	Fall 2013	1.85	142	33	100	275	51.64%	12.00%	36.36%	N/A							2.27	63	81	139	283	22.26%	28.62%	49.12%	N/A								
	Winter	2.53	46	39	192	277	16.61%	14.08%	69.31%	2.61	36	36	205	277	13.00%	13.00%	74.01%	2.55	45	36	200	281	16.01%	12.81%	71.17%	2.10	100	52	129	281	35.59%	18.51%	45.91%
	Spring	N/A				0				2.67	34	24	221	279	12.19%	8.60%	79.21%	N/A								2.19	91	46	146	283	32.16%	16.25%	51.59%
Multiracial	Fall 2013	2.10	46	10	57	113	40.71%	8.85%	50.44%	N/A							2.53	14	28	77	119	11.76%	23.53%	64.71%	N/A								
	Winter	2.62	12	21	86	119	10.08%	17.65%	72.27%	2.57	15	23	85	123	12.20%	18.70%	69.11%	2.65	17	11	101	129	13.18%	8.53%	78.29%	2.39	30	19	80	129	23.26%	14.73%	62.02%
	Spring	N/A				0				2.71	12	10	95	117	10.26%	8.55%	81.20%	N/A								2.42	27	18	79	124	21.77%	14.52%	63.71%
Pacific Islander	Fall 2013	1.67	32	4	15	51	62.75%	7.84%	29.41%	N/A							2.36	11	17	33	61	18.03%	27.87%	54.10%	N/A								
	Winter	2.33	11	12	28	51	21.57%	23.53%	54.90%	2.27	11	15	25	51	21.57%	29.41%	49.02%	2.63	6	9	41	56	10.71%	16.07%	73.21%	2.18	15	16	25	56	26.79%	28.57%	44.64%
	Spring	N/A				0				2.35	10	14	28	52	19.23%	26.92%	53.85%	N/A								2.36	11	13	31	55	20.00%	23.64%	56.36%
White	Fall 2013	2.19	205	40	314	559	36.67%	7.16%	56.17%	N/A							2.43	90	130	327	547	16.45%	23.77%	59.78%	N/A								
	Winter	2.67	53	77	423	553	9.58%	13.92%	76.49%	2.75	41	59	453	553	7.41%	10.67%	81.92%	2.67	62	54	424	540	11.48%	10.00%	78.52%	2.48	99	82	359	540	18.33%	15.19%	66.48%
	Spring	0.00				0				2.81	21	63	461	545	3.85%	11.56%	84.59%	N/A								2.53	90	72	376	538	16.73%	13.38%	69.89%
Special Education	Fall 2013	1.65	54	6	27	89	60.67%	6.74%	30.34%	N/A							1.81	38	16	23	77	49.35%	20.78%	29.87%	N/A								
	Winter	2.16	28	17	42	87	32.18%	19.54%	48.28%	2.33	19	20	48	87	21.84%	22.99%	55.17%	2.03	32	10	34	76	42.11%	13.16%	44.74%	1.76	39	16	21	76	51.32%	21.05%	27.63%
	Spring	N/A				0				2.43	18	15	57	90	20.00%	16.67%	63.33%	N/A								1.73	44	10	23	77	57.14%	12.99%	29.87%
ELL	Fall 2013	1.78	204	35	124	363	56.20%	9.64%	34.16%	N/A							2.31	76	96	189	361	21.05%	26.59%	52.35%	N/A								
	Winter	2.44	68	67	226	361	18.84%	18.56%	62.60%	2.50	62	58	241	361	17.17%	16.07%	66.76%	2.55	59	43	257	359	16.43%	11.98%	71.59%	2.16	112	77	170	359	31.20%	21.45%	47.35%
	Spring	N/A				0				2.59	51	48	271	370	13.78%	12.97%	73.24%	N/A								2.23	106	67	191	364	29.12%	18.41%	52.47%
Former ELL	Fall 2013	N/A							N/A								3.00	0	0	21	21	0.00%	0.00%	100.00%	N/A								
	Winter	N/A							N/A								3.00	0	0	18	18	0.00%	0.00%	100.00%	3.00	0	0	18	18	0.00%	0.00%	100.00%	
	Winter	N/A							N/A																2.85	1	1	18	20	5.00%	5.00%	90.00%	
ALL Students	Fall 2013	2.05	506	107	562	1175	43.06%	9.11%	47.83%	N/A							2.40	214	297	693	1204	17.77%	24.67%	57.56%	N/A								
	Winter	2.60	147	181	853	1181	12.45%	15.33%	72.23%	2.64	129	162	890	1181	10.92%	13.72%	75.36%	2.64	155	126	914	1195	12.97%	10.54%	76.49%	2.36	283	195	717	1195	23.68%	16.32%	60.00%
	Spring	N/A				0				2.73	90	136	943	1169	7.70%	11.63%	80.67%	N/A								2.43	252	179	762	1193	21.12%	15.00%	63.87%
Fall 2009		2.21	302	209	513	1024	29.49%	20.41%	50.10%	N/A							2.31	219	284	540	1043	21.00%	27.23%	51.77%									

		Index	Grade 2 DIBELS ORF							Index	Grade 3 DIBELS ORF							Index	Grade 4 DIBELS ORF							Index	Grade 5 DIBELS ORF						
			Count				Percent				Count				Percent				Count				Percent				Count				Percent		
			AR	MR	OT	Total	At Risk	Moderate Risk	On Target		AR	MR	OT	Total	At Risk	Moderate Risk	On Target		AR	MR	OT	Total	At Risk	Moderate Risk	On Target		AR	MR	OT	Total	At Risk	Moderate Risk	On Target
Am Indian	Fall 2013	2.31	3	3	7	13	23.08%	23.08%	53.85%	2.36	4	6	12	22	18.18%	27.27%	54.55%	2.35	5	3	12	20	25.00%	15.00%	60.00%	2.09	12	5	15	32	37.50%	15.63%	46.88%
	Spring	1.93	7	1	6	14	50.00%	7.14%	42.86%	2.23	4	9	9	22	18.18%	40.91%	40.91%	2.35	5	3	12	20	25.00%	15.00%	60.00%	2.10	12	4	15	31	38.71%	12.90%	48.39%
Asian	Fall 2013	2.58	11	10	55	76	14.47%	13.16%	72.37%	2.77	7	9	83	99	7.07%	9.09%	83.84%	2.59	11	19	70	100	11.00%	19.00%	70.00%	2.71	9	11	80	100	9.00%	11.00%	80.00%
	Spring	2.63	10	8	58	76	13.16%	10.53%	76.32%	2.64	12	12	76	100	12.00%	12.00%	76.00%	2.60	8	23	67	98	8.16%	23.47%	68.37%	2.75	9	7	84	100	9.00%	7.00%	84.00%
Black	Fall 2013	2.37	15	25	47	87	17.24%	28.74%	54.02%	2.34	16	27	46	89	17.98%	30.34%	51.69%	2.09	35	17	44	96	36.46%	17.71%	45.83%	2.29	22	21	48	91	24.18%	23.08%	52.75%
	Spring	2.47	16	16	58	90	17.78%	17.78%	64.44%	2.31	19	24	47	90	21.11%	26.67%	52.22%	2.21	26	23	46	95	27.37%	24.21%	48.42%	2.38	20	20	56	96	20.83%	20.83%	58.33%
Hispanic	Fall 2013	2.34	47	65	130	242	19.42%	26.86%	53.72%	2.25	61	72	127	260	23.46%	27.69%	48.85%	2.19	65	62	111	238	27.31%	26.05%	46.64%	2.48	43	43	161	247	17.41%	17.41%	65.18%
	Spring	2.42	48	48	151	247	19.43%	19.43%	61.13%	2.35	42	82	132	256	16.41%	32.03%	51.56%	2.31	55	58	131	244	22.54%	23.77%	53.69%	2.55	34	44	171	249	13.65%	17.67%	68.67%
Multiracial	Fall 2013	2.48	17	16	63	96	17.71%	16.67%	65.63%	2.54	8	16	46	70	11.43%	22.86%	65.71%	2.52	6	12	32	50	12.00%	24.00%	64.00%	2.36	8	9	22	39	20.51%	23.08%	56.41%
	Spring	2.59	13	12	67	92	14.13%	13.04%	72.83%	2.58	7	20	53	80	8.75%	25.00%	66.25%	2.44	7	15	30	52	13.46%	28.85%	57.69%	2.30	11	11	25	47	23.40%	23.40%	53.19%
Pacific Islander	Fall 2013	2.31	8	19	24	51	15.69%	37.25%	47.06%	2.11	12	15	17	44	27.27%	34.09%	38.64%	2.23	6	12	13	31	19.35%	38.71%	41.94%	2.21	9	9	16	34	26.47%	26.47%	47.06%
	Spring	2.49	10	6	35	51	19.61%	11.76%	68.63%	2.15	6	23	12	41	14.63%	56.10%	29.27%	2.03	10	11	11	32	31.25%	34.38%	34.38%	2.39	6	5	17	28	21.43%	17.86%	60.71%
White	Fall 2013	2.48	84	122	349	555	15.14%	21.98%	62.88%	2.48	80	121	335	536	14.93%	22.57%	62.50%	2.41	115	112	350	577	19.93%	19.41%	60.66%	2.60	63	87	380	530	11.89%	16.42%	71.70%
	Spring	2.57	77	83	390	550	14.00%	15.09%	70.91%	2.51	63	134	330	527	11.95%	25.43%	62.62%	2.50	79	119	359	557	14.18%	21.36%	64.45%	2.62	56	89	383	528	10.61%	16.86%	72.54%
Special Education	Fall 2013	1.73	44	21	21	86	51.16%	24.42%	24.42%	1.75	54	22	28	104	51.92%	21.15%	26.92%	1.50	83	15	23	121	68.60%	12.40%	19.01%	1.64	67	25	25	117	57.26%	21.37%	21.37%
	Spring	1.82	41	15	26	82	50.00%	18.29%	31.71%	1.84	42	32	26	100	42.00%	32.00%	26.00%	1.63	69	24	25	118	58.47%	20.34%	21.19%	1.72	61	25	29	115	53.04%	21.74%	25.22%
ELL	Fall 2013	2.22	68	82	131	281	24.20%	29.18%	46.62%	2.00	76	88	77	241	31.54%	36.51%	31.95%	1.97	77	64	71	212	36.32%	30.19%	33.49%	1.91	60	38	47	145	41.38%	26.21%	32.41%
	Spring	2.34	66	57	162	285	23.16%	20.00%	56.84%	2.14	61	87	95	243	25.10%	35.80%	39.09%	2.07	65	69	79	213	30.52%	32.39%	37.09%	2.09	49	39	63	151	32.45%	25.83%	41.72%
Former ELL	Fall 2013	2.87	0	6	40	46	0.00%	13.04%	86.96%	2.80	1	8	41	50	2.00%	16.00%	82.00%	2.43	5	3	15	23	21.74%	13.04%	65.22%	2.86	0	2	12	14	0.00%	14.29%	85.71%
	Spring	2.95	0	2	41	43	0.00%	4.65%	95.35%	2.79	0	10	37	47	0.00%	21.28%	78.72%	2.50	3	6	15	24	12.50%	25.00%	62.50%	2.86	1	0	13	14	7.14%	0.00%	92.86%
ALL Students	Fall 2013	2.43	187	260	675	1122	16.67%	23.17%	60.16%	2.43	188	266	667	1121	16.77%	23.73%	59.50%	2.35	247	237	635	1119	22.07%	21.18%	56.75%	2.52	167	185	722	1074	15.55%	17.23%	67.23%
	Spring	2.52	181	174	765	1120	16.16%	15.54%	68.30%	2.45	153	304	659	1116	13.71%	27.24%	59.05%	2.42	190	252	656	1098	17.30%	22.95%	59.74%	2.56	148	180	751	1079	13.72%	16.68%	69.60%
Fall 2009										2.31	228	220	537	985	23.15%	22.34%	54.52%	2.34	247	204	599	1050	23.52%	19.43%	57.05%	2.46	198	161	671	1030	19.22%	15.63%	65.15%

Fall 2013 to Spring 2014 Auburn School District  
Reading Results Measures of Academic Progress  
Spring 2014 Report

		Index	Grade 3 MAPS Reading							Index	Grade 5 MAPS Reading						
			Count				Percent				Count				Percent		
			AR	MR	OT	Total	At Risk 1st-24%ile	Moderate Risk 25th-49th%ile	On Target 50th% and above		AR	MR	OT	Total	At Risk 1st-24%ile	Moderate Risk 25th-49th%ile	On Target 50th% and above
Am Indian	Fall 2013	1.67	8	4	3	15	53.33%	26.67%	20.00%	1.41	12	3	2	17	70.59%	17.65%	11.76%
	Spring 2014	1.63	9	4	3	16	56.25%	25.00%	18.75%	1.38	11	4	1	16	68.75%	25.00%	6.25%
Asian	Fall 2013	2.50	12	21	57	90	13.33%	23.33%	63.33%	2.46	16	14	55	85	18.82%	16.47%	64.71%
	Spring 2014	2.43	16	21	56	93	17.20%	22.58%	60.22%	2.46	16	14	55	85	18.82%	16.47%	64.71%
Black	Fall 2013	2.00	28	20	28	76	36.84%	26.32%	36.84%	1.96	29	20	26	75	38.67%	26.67%	34.67%
	Spring 2014	1.96	33	14	30	77	42.86%	18.18%	38.96%	2.01	28	25	29	82	34.15%	30.49%	35.37%
Hispanic	Fall 2013	1.89	121	64	91	276	43.84%	23.19%	32.97%	2.00	95	65	95	255	37.25%	25.49%	37.25%
	Spring 2014	1.95	110	84	96	290	37.93%	28.97%	33.10%	1.99	95	75	92	262	36.26%	28.63%	35.11%
Multiracial	Fall 2013	2.24	24	18	45	87	27.59%	20.69%	51.72%	2.14	22	13	31	66	33.33%	19.70%	46.97%
	Spring 2014	2.24	26	18	48	92	28.26%	19.57%	52.17%	2.19	19	22	33	74	25.68%	29.73%	44.59%
Pacific Islander	Fall 2013	1.57	22	9	6	37	59.46%	24.32%	16.22%	1.53	23	4	7	34	67.65%	11.76%	20.59%
	Spring 2014	1.41	25	9	3	37	67.57%	24.32%	8.11%	1.62	15	10	4	29	51.72%	34.48%	13.79%
White	Fall 2013	2.33	124	82	290	496	25.00%	16.53%	58.47%	2.39	99	111	300	510	19.41%	21.76%	58.82%
	Spring 2014	2.37	111	89	295	495	22.42%	17.98%	59.60%	2.41	85	124	293	502	16.93%	24.70%	58.37%
ALL Students	Fall 2013	2.16	345	221	525	1091	31.62%	20.26%	48.12%	2.21	297	235	518	1050	28.29%	22.38%	49.33%
	Spring 2014	2.18	330	239	531	1100	30.00%	21.73%	48.27%	2.23	269	274	507	1050	25.62%	26.10%	48.29%
2009	Fall	2.11	325	204	430	959	33.89%	21.27%	44.84%	2.17	290	247	457	994	29.18%	24.85%	45.98%

Legend		
	Definition	Formula
Participation	Shows percentage of students participating in the fall assessment window	"=Total Students tested/Total Students Rostered"
Index	A group scoring a 1 has 100% of students At Risk (below the 25th percentile); A group with 3.0 has 100% of students On Target (above the 50th percentile)	"= (.01*%AR)+(.02*%MR)+(.03*%OT)"
AR	At Risk; students in this cell on MAP scored below the 25th percentile	
MR	Moderate Risk; students in this cell on MAP scored between the 25th and the 49th percentile	
OT	On Target; students in this cell on MAP scored above the 50th percentile	
	Dots indicate more than one third of students fell below the 25th percentile	"=AR ≥ 33.4%"

			Grade 6 MAPS Reading								Grade 7 MAPS Reading								Grade 8 MAPS Reading						
			Count				Percent				Count				Percent				Count				Percent		
			Index	AR	MR	OT	Total	At Risk 1st-24%ile	Moderate Risk 25th-49th%ile		On Target 50th% and above	Index	AR	MR	OT	Total	At Risk 1st-24%ile		Moderate Risk 25th-49th%ile	On Target 50th% and above	Index	AR	MR	OT	Total
Am Indian	Fall 2013	1.81	8	3	5	16	50.00%	18.75%	31.25%	2.07	6	2	7	15	40.00%	13.33%	46.67%	1.47	12	2	3	17	70.59%	11.76%	17.65%
	Spring 2014	1.94	8	2	7	17	47.06%	11.76%	41.18%	2.14	5	2	7	14	35.71%	14.29%	50.00%	2.00	4	5	4	13	30.77%	38.46%	30.77%
Asian	Fall 2013	2.52	9	17	47	73	12.33%	23.29%	64.38%	2.33	15	28	44	87	17.24%	32.18%	50.57%	2.39	20	19	58	97	20.62%	19.59%	59.79%
	Spring 2014	2.55	7	19	47	73	9.59%	26.03%	64.38%	2.47	13	20	53	86	15.12%	23.26%	61.63%	2.58	8	23	61	92	8.70%	25.00%	66.30%
Black	Fall 2013	1.94	35	17	30	82	42.68%	20.73%	36.59%	2.03	30	26	33	89	33.71%	29.21%	37.08%	2.21	26	19	45	90	28.89%	21.11%	50.00%
	Spring 2014	2.04	26	20	29	75	34.67%	26.67%	38.67%	1.93	29	23	24	76	38.16%	30.26%	31.58%	2.18	24	19	39	82	29.27%	23.17%	47.56%
Hispanic	Fall 2013	1.95	102	89	87	278	36.69%	32.01%	31.29%	1.91	101	83	78	262	38.55%	31.68%	29.77%	2.04	75	85	84	244	30.74%	34.84%	34.43%
	Spring 2014	1.99	89	91	86	266	33.46%	34.21%	32.33%	2.00	77	90	77	244	31.56%	36.89%	31.56%	2.13	63	75	93	231	27.27%	32.47%	40.26%
Multiracial	Fall 2013	2.15	27	17	40	84	32.14%	20.24%	47.62%	2.23	20	19	38	77	25.97%	24.68%	49.35%	2.40	17	20	53	90	18.89%	22.22%	58.89%
	Spring 2014	2.29	20	15	42	77	25.97%	19.48%	54.55%	2.25	16	23	34	73	21.92%	31.51%	46.58%	2.40	15	19	47	81	18.52%	23.46%	58.02%
Pacific Islander	Fall 2013	1.59	24	14	6	44	54.55%	31.82%	13.64%	1.41	23	8	3	34	67.65%	23.53%	8.82%	1.87	13	8	9	30	43.33%	26.67%	30.00%
	Spring 2014	1.64	25	7	10	42	59.52%	16.67%	23.81%	1.44	25	6	5	36	69.44%	16.67%	13.89%	1.72	12	8	5	25	48.00%	32.00%	20.00%
White	Fall 2013	2.35	102	118	272	492	20.73%	23.98%	55.28%	2.44	75	129	292	496	15.12%	26.01%	58.87%	2.43	83	133	311	527	15.75%	25.24%	59.01%
	Spring 2014	2.40	83	108	266	457	18.16%	23.63%	58.21%	2.46	68	122	292	482	14.11%	25.31%	60.58%	2.49	68	118	316	502	13.55%	23.51%	62.95%
ALL Students	Fall 2013	2.17	309	275	487	1071	28.85%	25.68%	45.47%	2.21	270	295	496	1061	25.45%	27.80%	46.75%	2.29	246	287	563	1096	22.45%	26.19%	51.37%
	Spring 2014	2.23	258	262	487	1007	25.62%	26.02%	48.36%	2.26	233	286	492	1011	23.05%	28.29%	48.66%	2.36	194	267	565	1026	18.91%	26.02%	55.07%
2009	Fall	2.15	302	274	453	1029	29.35%	26.63%	44.02%	2.17	308	278	486	1072	28.73%	25.93%	45.34%	2.28	241	248	520	1009	23.89%	24.58%	51.54%

		Index	Grade 9 MAPS Reading						
			Count				Percent		
			AR	MR	OT	Total	At Risk 1st-24%ile	Moderate Risk 25th-49th%ile	On Target 50th% and above
Am Indian	Fall 2013	2.20	8	4	13	25	32.00%	16.00%	52.00%
	Spring 2014	2.38	3	7	11	21	14.29%	33.33%	52.38%
Asian	Fall 2013	2.56	9	16	53	78	11.54%	20.51%	67.95%
	Spring 2014	2.73	5	14	69	88	5.68%	15.91%	78.41%
Black	Fall 2013	2.21	12	26	25	63	19.05%	41.27%	39.68%
	Spring 2014	2.12	19	23	27	69	27.54%	33.33%	39.13%
Hispanic	Fall 2013	2.20	54	73	98	225	24.00%	32.44%	43.56%
	Spring 2014	2.19	51	80	94	225	22.67%	35.56%	41.78%
Multiracial	Fall 2013	2.47	11	17	46	74	14.86%	22.97%	62.16%
	Spring 2014	1.70	10	6	4	20	50.00%	30.00%	20.00%
Pacific Islander	Fall 2013	1.75	8	4	4	16	50.00%	25.00%	25.00%
	Spring 2014	2.00	4	6	4	14	28.57%	42.86%	28.57%
White	Fall 2013	2.55	71	105	370	546	13.00%	19.23%	67.77%
	Spring 2014	2.61	57	99	389	545	10.46%	18.17%	71.38%
ALL Students	Fall 2013	2.42	175	250	612	1037	16.88%	24.11%	59.02%
	Spring 2014	2.47	149	245	637	1031	14.45%	23.76%	61.78%
2009	Fall	2.32	216	276	548	1040	20.77%	26.54%	52.69%

Fall 2013 to Spring 2014 Auburn School District  
Mathematics Results Measures of Academic Progress  
Spring 2014 Report

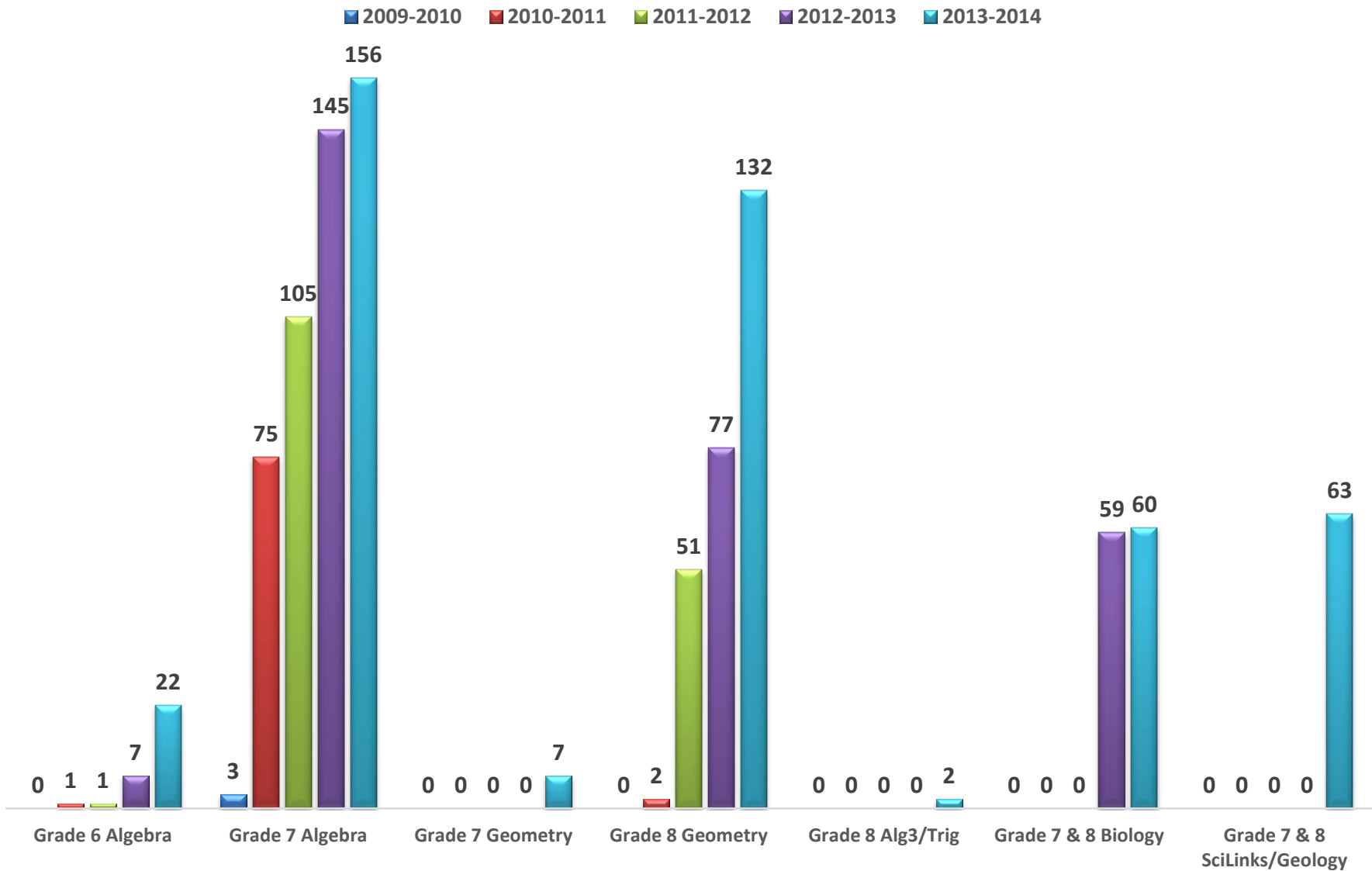
		Index	Grade 3 MAPS Mathematics									Index	Grade 5 MAPS Mathematics								
			Count				Percent						Count				Percent				
			AR	MR	OT	Total	At Risk 1st-24%ile	Moderate Risk 25th-49th%ile	On Target 50th% and above	AR	MR		OT	Total	At Risk 1st-24%ile	Moderate Risk 25th-49th%ile	On Target 50th% and above				
Am Indian	Fall 2013	1.47	12	2	3	17	70.59%	11.76%	17.65%	1.50	11	2	3	16	68.75%	12.50%	18.75%				
	Spring 2014	1.88	8	2	6	16	50.00%	12.50%	37.50%	1.47	10	3	2	15	66.67%	20.00%	13.33%				
Asian	Fall 2013	2.39	18	21	55	94	19.15%	22.34%	58.51%	2.44	18	11	55	84	21.43%	13.10%	65.48%				
	Spring 2014	2.50	18	10	64	92	19.57%	10.87%	69.57%	2.55	14	10	61	85	16.47%	11.76%	71.76%				
Black	Fall 2013	1.92	29	25	23	77	37.66%	32.47%	29.87%	1.88	34	16	25	75	45.33%	21.33%	33.33%				
	Spring 2014	2.15	25	14	36	75	33.33%	18.67%	48.00%	1.98	33	17	31	81	40.74%	20.99%	38.27%				
Hispanic	Fall 2013	1.85	123	79	81	283	43.46%	27.92%	28.62%	1.96	98	69	87	254	38.58%	27.17%	34.25%				
	Spring 2014	2.06	101	69	119	289	34.95%	23.88%	41.18%	2.06	89	66	105	260	34.23%	25.38%	40.38%				
Multiracial	Fall 2013	2.13	29	19	40	88	32.95%	21.59%	45.45%	2.13	21	16	30	67	31.34%	23.88%	44.78%				
	Spring 2014	2.29	22	23	49	94	23.40%	24.47%	52.13%	2.19	23	15	37	75	30.67%	20.00%	49.33%				
Pacific Islander	Fall 2013	1.53	22	6	6	34	64.71%	17.65%	17.65%	1.34	24	5	3	32	75.00%	15.63%	9.38%				
	Spring 2014	1.66	20	7	8	35	57.14%	20.00%	22.86%	1.62	15	6	5	26	57.69%	23.08%	19.23%				
White	Fall 2013	2.25	135	102	262	499	27.05%	20.44%	52.51%	2.27	125	114	262	501	24.95%	22.75%	52.30%				
	Spring 2014	2.42	93	97	302	492	18.90%	19.72%	61.38%	2.41	94	110	300	504	18.65%	21.83%	59.52%				
ALL Students	Fall 2013	2.09	375	258	474	1107	33.88%	23.31%	42.82%	2.13	334	234	469	1037	32.21%	22.57%	45.23%				
	Spring 2014	2.27	287	222	584	1093	26.26%	20.31%	53.43%	2.25	278	227	541	1046	26.58%	21.70%	51.72%				
2009	Fall	2.14	314	203	446	963	32.61%	21.08%	46.31%	2.16	290	265	449	1004	28.88%	26.39%	44.72%				

Legend		
	Definition	Formula
Participation	Shows percentage of students participating in the fall assessment window	"=Total Students tested/Total Students Rostered"
Index	A group scoring a 1 has 100% of students At Risk (below the 25th percentile); A group with 3.0 has 100% of students On Target (above the 50th percentile)	"=((.01*%AR)+(.02*%MR)+(.03*%OT))"
AR	At Risk; students in this cell on MAP scored below the 25th percentile	
MR	Moderate Risk; students in this cell on MAP scored between the 25th and the 49th percentile	
OT	On Target; students in this cell on MAP scored above the 50th percentile	
	Dots indicate more than one third of students fell below the 25th percentile	"=AR ≥ 33.4%"

		Index	Grade 6 MAPS Mathematics							Index	Grade 7 MAPS Mathematics							Index	Grade 8 MAPS Mathematics						
			Count				Percent				Count				Percent				Count				Percent		
			AR	MR	OT	Total	At Risk 1st-24%ile	Moderate Risk 25th-49th%ile	On Target 50th% and above		AR	MR	OT	Total	At Risk 1st-24%ile	Moderate Risk 25th-49th%ile	On Target 50th% and above		AR	MR	OT	Total	At Risk 1st-24%ile	Moderate Risk 25th-49th%ile	On Target 50th% and above
Am Indian	Fall 2013	1.87	7	3	5	15	46.67%	20.00%	33.33%	2.00	5	4	5	14	35.71%	28.57%	35.71%	1.75	8	4	4	16	50.00%	25.00%	25.00%
	Spring 2014	1.81	9	1	6	16	56.25%	6.25%	37.50%	1.93	5	6	4	15	33.33%	40.00%	26.67%	1.92	5	4	4	13	38.46%	30.77%	30.77%
Asian	Fall 2013	2.49	10	17	46	73	13.70%	23.29%	63.01%	2.46	11	25	51	87	12.64%	28.74%	58.62%	2.39	18	23	56	97	18.56%	23.71%	57.73%
	Spring 2014	2.59	7	17	51	75	9.33%	22.67%	68.00%	2.56	9	20	57	86	10.47%	23.26%	66.28%	2.47	14	19	56	89	15.73%	21.35%	62.92%
Black	Fall 2013	1.99	29	22	28	79	36.71%	27.85%	35.44%	1.81	40	22	24	86	46.51%	25.58%	27.91%	1.96	31	34	27	92	33.70%	36.96%	29.35%
	Spring 2014	2.09	20	33	27	80	25.00%	41.25%	33.75%	1.95	27	27	23	77	35.06%	35.06%	29.87%	2.00	30	23	30	83	36.14%	27.71%	36.14%
Hispanic	Fall 2013	1.97	97	87	89	273	35.53%	31.87%	32.60%	1.95	100	75	87	262	38.17%	28.63%	33.21%	1.97	94	71	86	251	37.45%	28.29%	34.26%
	Spring 2014	2.10	81	83	109	273	29.67%	30.40%	39.93%	2.00	85	75	85	245	34.69%	30.61%	34.69%	2.01	74	59	77	210	35.24%	28.10%	36.67%
Multiracial	Fall 2013	2.21	22	21	39	82	26.83%	25.61%	47.56%	2.01	26	24	27	77	33.77%	31.17%	35.06%	2.26	21	25	44	90	23.33%	27.78%	48.89%
	Spring 2014	2.28	17	23	39	79	21.52%	29.11%	49.37%	2.24	13	30	31	74	17.57%	40.54%	41.89%	2.32	17	20	42	79	21.52%	25.32%	53.16%
Pacific Islander	Fall 2013	1.72	20	15	8	43	46.51%	34.88%	18.60%	1.40	25	6	4	35	71.43%	17.14%	11.43%	1.77	16	5	9	30	53.33%	16.67%	30.00%
	Spring 2014	1.70	23	10	10	43	53.49%	23.26%	23.26%	1.71	19	6	9	34	55.88%	17.65%	26.47%	1.89	12	6	9	27	44.44%	22.22%	33.33%
White	Fall 2013	2.34	90	148	259	497	18.11%	29.78%	52.11%	2.36	98	123	274	495	19.80%	24.85%	55.35%	2.43	80	144	309	533	15.01%	27.02%	57.97%
	Spring 2014	2.49	58	122	289	469	12.37%	26.01%	61.62%	2.43	84	112	292	488	17.21%	22.95%	59.84%	2.47	67	124	296	487	13.76%	25.46%	60.78%
ALL Students	Fall 2013	2.19	277	313	474	1064	26.03%	29.42%	44.55%	2.16	306	279	473	1058	28.92%	26.37%	44.71%	2.24	268	307	535	1110	24.14%	27.66%	48.20%
	Spring 2014	2.31	215	289	531	1035	20.77%	27.92%	51.30%	2.25	242	275	501	1018	23.77%	27.01%	49.21%	2.30	219	255	514	988	22.17%	25.81%	52.02%
2009	Fall	2.14	294	248	485	1051	27.97%	23.60%	46.15%	2.41	288	254	566	1036	27.80%	24.52%	54.63%	2.25	189	207	610	1080	17.50%	19.17%	56.48%

		Index	Grade 9 MAPS Mathematics						
			Count				Percent		
			AR	MR	OT	Total	At Risk 1st-24thile	Moderate Risk 25th-49thile	On Target 50th% and above
Am Indian	Fall 2013	2.04	9	5	10	24	37.50%	20.83%	41.67%
	Spring 2014	2.22	5	4	9	18	27.78%	22.22%	50.00%
Asian	Fall 2013	2.56	7	18	47	72	9.72%	25.00%	65.28%
	Spring 2014	2.70	5	11	55	71	7.04%	15.49%	77.46%
Black	Fall 2013	1.97	20	25	18	63	31.75%	39.68%	28.57%
	Spring 2014	2.08	21	16	26	63	33.33%	25.40%	41.27%
Hispanic	Fall 2013	2.05	71	76	82	229	31.00%	33.19%	35.81%
	Spring 2014	2.17	59	69	98	226	26.11%	30.53%	43.36%
Multiracial	Fall 2013	2.35	14	18	39	71	19.72%	25.35%	54.93%
	Spring 2014	2.39	14	10	38	62	22.58%	16.13%	61.29%
Pacific Islander	Fall 2013	2.08	5	2	6	13	38.46%	15.38%	46.15%
	Spring 2014	2.07	6	1	7	14	42.86%	7.14%	50.00%
White	Fall 2013	2.45	68	127	279	474	14.35%	26.79%	58.86%
	Spring 2014	2.53	62	98	308	468	13.25%	20.94%	65.81%
ALL Students	Fall 2013	2.30	195	275	483	953	20.46%	28.86%	50.68%
	Spring 2014	2.40	172	209	541	922	18.66%	22.67%	58.68%
2009	Fall	2.42	160	241	558	959	16.68%	25.13%	58.19%

**Auburn School District  
Middle School Acceleration in Math and Science  
Enrollments 2009-2010 to 2013-2014**



**Auburn School District**  
**Grade 9 Credits Earned**  
**2010-2014 Semester 2 Report**

		Index	Grade 9 Earned Credits						
			Count				Percent		
			AR	MR	OT	Total	At Risk	Moderate Risk	On Target
Am Indian	2009-2010 S2	2.00	15	4	15	34	44.12%	11.76%	44.12%
	2010-2011 S2	2.22	8	5	14	27	29.63%	18.52%	51.85%
	2011-2012 S2	2.38	2	4	7	13	15.38%	30.77%	53.85%
	2012-2013 S2	2.00	9	6	9	24	37.50%	25.00%	37.50%
	2013-2014 S2	2.30	5	6	12	23	21.74%	26.09%	52.17%
Asian	2009-2010 S2	2.54	22	21	99	142	15.49%	14.79%	69.72%
	2010-2011 S2	2.73	6	17	85	108	5.56%	15.74%	78.70%
	2011-2012 S2	2.73	9	11	87	107	8.41%	10.28%	81.31%
	2012-2013 S2	2.68	6	17	67	90	6.67%	18.89%	74.44%
	2013-2014 S2	2.83	4	8	80	92	4.35%	8.70%	86.96%
Black	2009-2010 S2	2.23	22	28	44	94	23.40%	29.79%	46.81%
	2010-2011 S2	2.24	23	28	47	98	23.47%	28.57%	47.96%
	2011-2012 S2	2.27	18	22	39	79	22.78%	27.85%	49.37%
	2012-2013 S2	2.27	19	19	40	78	24.36%	24.36%	51.28%
	2013-2014 S2	2.35	13	25	41	79	16.46%	31.65%	51.90%
Hispanic	2009-2010 S2	2.19	48	54	84	186	25.81%	29.03%	45.16%
	2010-2011 S2	2.27	35	58	83	176	19.89%	32.95%	47.16%
	2011-2012 S2	2.27	50	65	112	227	22.03%	28.63%	49.34%
	2012-2013 S2	2.16	62	81	101	244	25.41%	33.20%	41.39%
	2013-2014 S2	2.33	47	78	131	256	18.36%	30.47%	51.17%
Multiracial	2009-2010 S2	2.20	1	2	2	5	20.00%	40.00%	40.00%
	2010-2011 S2	2.41	4	5	13	22	18.18%	22.73%	59.09%
	2011-2012 S2	2.35	15	26	45	86	17.44%	30.23%	52.33%
	2012-2013 S2	2.43	12	23	47	82	14.63%	28.05%	57.32%
	2013-2014 S2	2.58	6	22	52	80	7.50%	27.50%	65.00%
Pacific Islander	2009-2010 S2	2.00	1	2	1	4	25.00%	50.00%	25.00%
	2010-2011 S2	2.00	2	4	2	8	25.00%	50.00%	25.00%
	2011-2012 S2	1.94	12	10	10	32	37.50%	31.25%	31.25%
	2012-2013 S2	2.12	8	6	11	25	32.00%	24.00%	44.00%
	2013-2014 S2	2.38	3	4	9	16	18.75%	25.00%	56.25%
White	2009-2010 S2	2.61	82	120	525	727	11.28%	16.51%	72.21%
	2010-2011 S2	2.59	89	123	520	732	12.16%	16.80%	71.04%
	2011-2012 S2	2.64	60	121	485	666	9.01%	18.17%	72.82%
	2012-2013 S2	2.59	69	120	436	625	11.04%	19.20%	69.76%
	2013-2014 S2	2.65	50	106	437	593	8.43%	17.88%	73.69%
ALL Students	2009-2010 S2	2.49	191	232	770	1193	16.01%	19.45%	64.54%
	2010-2011 S2	2.51	167	240	764	1171	14.26%	20.50%	65.24%
	2011-2012 S2	2.51	166	259	785	1210	13.72%	21.40%	64.88%
	2012-2013 S2	2.45	185	272	711	1168	15.84%	23.29%	60.87%
	2013-2014 S2	2.56	128	249	762	1139	11.24%	21.86%	66.90%

S2 AR=0-3.9 credits, MR=4.0-5.9 credits, OT=6+ credits



# Auburn School District High School

## Advanced CTE

### 2013-2014 End of Year Report

		Total Percent of Enrollments	Advanced CTE Courses														
			Percent				Count										
			Grade 9	Grade 10	Grade 11	Grade 12	9		10		11		12		Total		
							F	M	F	M	F	M	F	M			
Am Indian	2008-2009 EOY	2.38%	1.79%	21.43%	53.57%	23.21%	1		8	4	10	20	5	8	56		
	2010-2011 EOY	2.03%	2.08%	16.67%	31.25%	50.00%	0	1	3	5	9	6	13	11	48		
	2012-2013 EOY	1.02%	24.00%	12.00%	16.00%	48.00%		6		3	4		6	6	25		
	2013-2014 EOY	1.22%	26.83%	36.59%	17.07%	19.51%	4	7	5	10	1	6	7	1	41		
Asian	2008-2009 EOY	8.87%	3.83%	25.36%	27.27%	43.54%	2	6	24	29	40	17	39	52	209		
	2010-2011 EOY	11.14%	2.27%	21.97%	29.17%	46.59%	2	4	35	23	37	40	44	79	264		
	2012-2013 EOY	8.33%	7.35%	25.49%	29.41%	37.75%	2	13	32	20	33	27	45	32	204		
	2013-2014 EOY	8.35%	8.21%	23.57%	32.86%	35.36%	7	16	32	34	54	38	65	34	280		
Black	2008-2009 EOY	4.93%	7.76%	23.28%	33.62%	35.34%	1	8	10	17	20	19	18	23	116		
	2010-2011 EOY	5.99%	3.52%	19.72%	30.28%	46.48%	3	2	16	12	21	22	22	44	142		
	2012-2013 EOY	4.98%	11.48%	18.03%	24.59%	45.90%	3	11	11	11	17	13	32	24	122		
	2013-2014 EOY	5.01%	14.88%	15.48%	34.52%	35.12%	13	12	14	12	34	24	25	34	168		
Hispanic	2008-2009 EOY	8.62%	2.96%	30.05%	27.09%	39.90%	2	4	19	42	21	34	30	51	203		
	2010-2011 EOY	12.62%	4.35%	18.06%	29.10%	48.49%	5	8	21	33	36	51	42	103	299		
	2012-2013 EOY	16.50%	9.41%	16.09%	29.46%	45.05%	6	32	27	38	55	64	87	95	404		
	2013-2014 EOY	19.03%	16.61%	21.00%	27.74%	34.64%	52	54	61	73	90	87	111	110	638		
Multiracial	2008-2009 EOY	0.08%	0.00%	100.00%	0.00%	0.00%			2						2		
	2010-2011 EOY	0.80%	10.53%	10.53%	47.37%	31.58%	2	0	0	2	6	3	6	0	19		
	2012-2013 EOY	6.74%	7.27%	20.00%	24.85%	47.88%		12	13	20	22	19	32	47	165		
	2013-2014 EOY	6.65%	12.11%	24.66%	25.56%	37.67%	12	15	24	31	30	27	41	43	223		
Pacific Islander	2008-2009 EOY	0.21%	20.00%	20.00%	60.00%	0.00%		1	1		1	2			5		
	2010-2011 EOY	0.42%	10.00%	20.00%	50.00%	20.00%	0	1	1	1	3	2	2	0	10		
	2012-2013 EOY	1.43%	11.43%	20.00%	37.14%	31.43%	1	3	4	3	12	1	3	8	35		
	2013-2014 EOY	1.31%	11.36%	20.45%	40.91%	27.27%	2	3	4	5	14	4	9	3	44		
White	2008-2009 EOY	74.82%	3.41%	16.46%	37.17%	42.96%	18	42	124	166	279	376	371	386	1762		
	2010-2011 EOY	66.91%	3.22%	18.93%	34.01%	43.85%	17	34	122	178	278	261	301	394	1585		
	2012-2013 EOY	61.00%	8.30%	21.42%	29.92%	40.36%	20	104	157	163	227	220	256	347	1494		
	2013-2014 EOY	58.43%	12.05%	18.07%	29.76%	40.12%	108	128	153	201	301	282	366	420	1959		
ALL Students	2008-2009 EOY	100.00%	3.61%	18.94%	35.71%	41.74%	85		446		841		983		2355		
	2010-2011 EOY	100.00%	3.38%	19.08%	32.76%	44.79%	80		452		776		1061		2369		
	2012-2013 EOY	100.00%	8.70%	20.50%	29.15%	41.65%	32	181	244	258	370	344	461	559	2449		
	2013-2014 EOY	100.00%	12.91%	19.65%	29.59%	37.85%	198	235	293	366	524	468	624	645	3353		

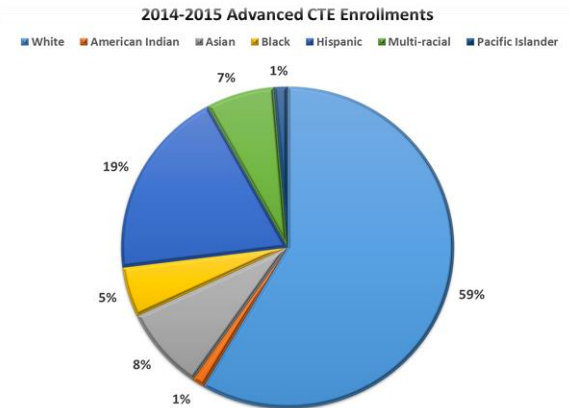
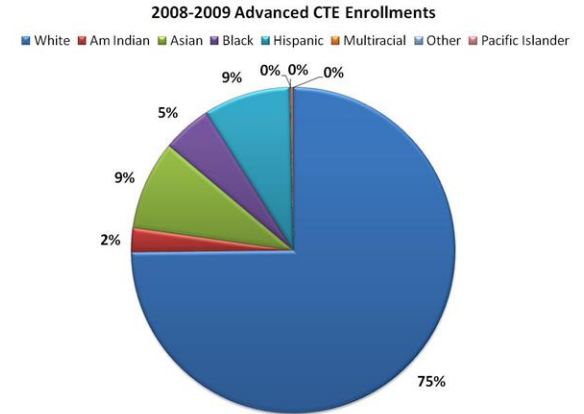
2008-2009 Advanced CTE Enrollments

Race/Ethnicity	Percentage
White	75%
Am Indian	2%
Asian	9%
Black	5%
Hispanic	9%
Multiracial	0%
Other	0%
Pacific Islander	0%

2014-2015 Advanced CTE Enrollments

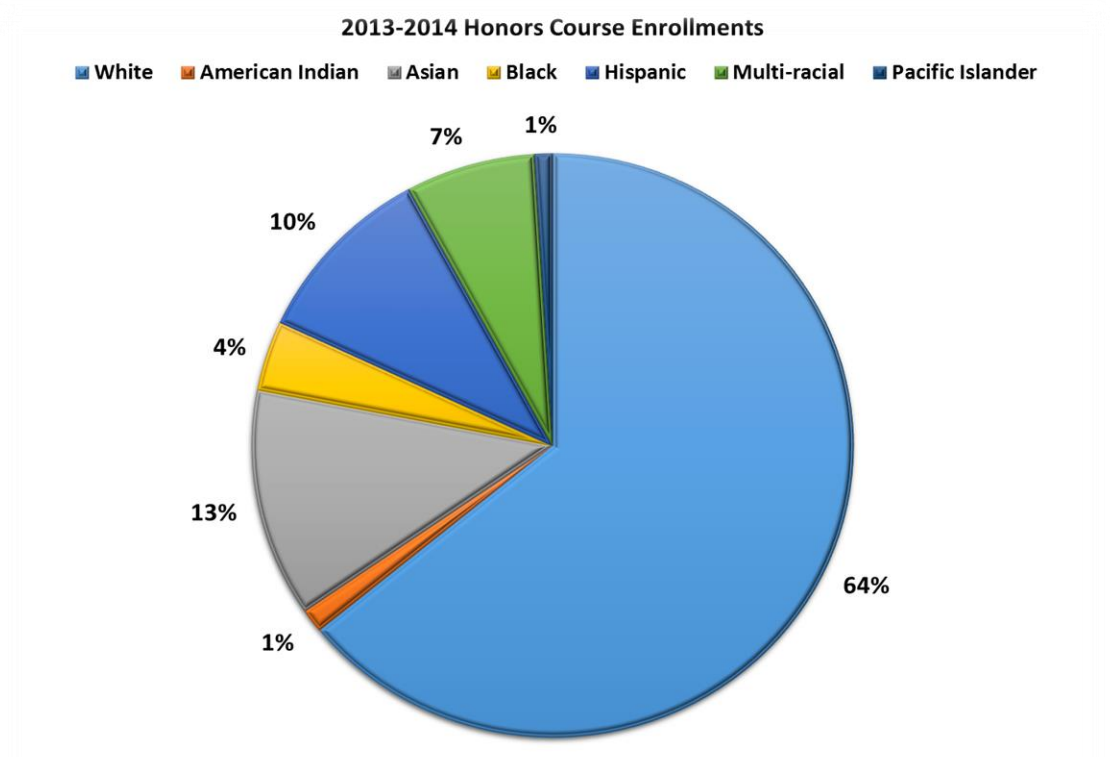
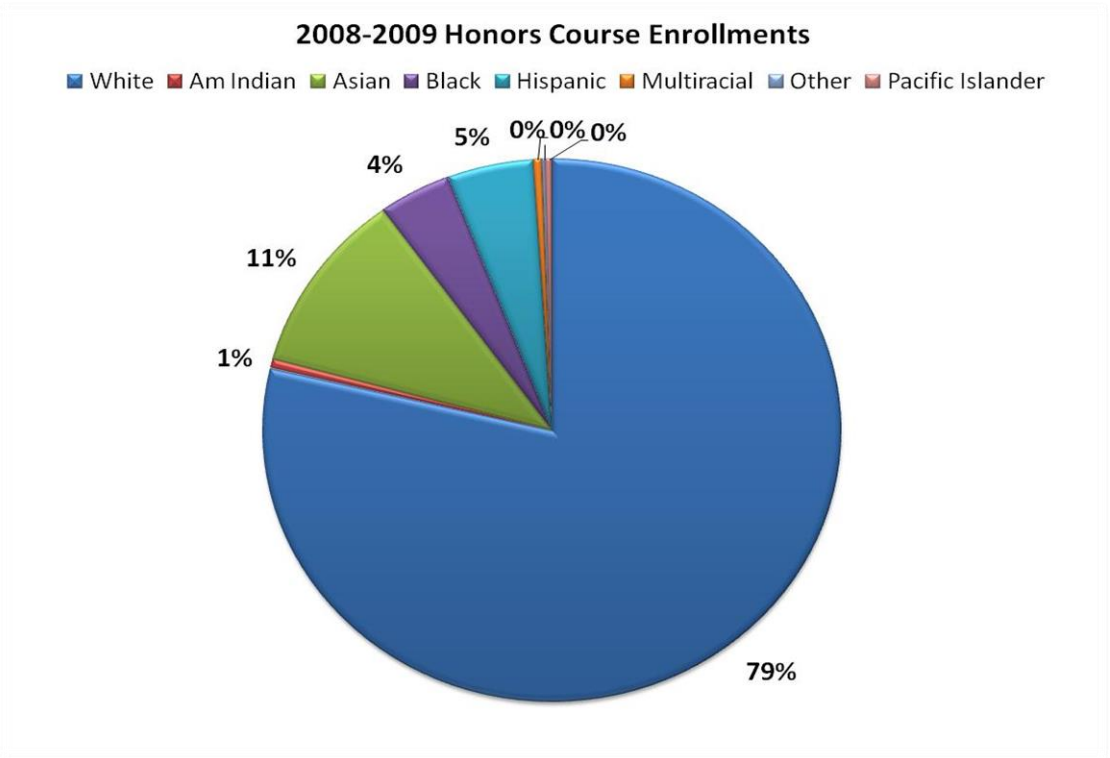
Race/Ethnicity	Percentage
White	59%
Am Indian	1%
Asian	7%
Black	1%
Hispanic	19%
Multi-racial	8%
Pacific Islander	1%

\*2009-2010 S1 numbers corrected from previous version-Business Math and Auto Tech 1 now excluded



Auburn School District High School Honors 2013 - 2014 End of Year Report

		Total Percent of Enrollments	High School Honors Courses*													
			Percent				Count									
							9		10		11		12		Total	
			Grade 9	Grade 10	Grade 11	Grade 12	F	M	F	M	F	M	F	M		
Am Indian	2008-2009 EOY	0.55%	75.00%	25.00%	0.00%	0.00%	2	4	2							8
	2009-2010 EOY	0.82%	66.67%	33.33%	0.00%	0.00%	4	4	4							12
	2010-2011 EOY	1.08%	52.94%	47.06%	0.00%	0.00%	6	3	6	2						17
	2011-2012 EOY	0.25%	50.00%	50.00%	0.00%	0.00%		2		2						4
	2012-2013 EOY	0.89%	76.92%	23.08%	0.00%	0.00%	4	6		3						13
	2013-2014 EOY	1.30%	62.50%	37.50%	0.00%	0.00%	10		2	4						16
Asian	2008-2009 EOY	10.87%	51.27%	48.73%	0.00%	0.00%	41	40	42	35						158
	2009-2010 EOY	13.04%	62.63%	37.37%	0.00%	0.00%	80	39	41	30						190
	2010-2011 EOY	14.44%	56.83%	43.17%	0.00%	0.00%	91	38	66	32						227
	2011-2012 EOY	13.48%	67.76%	32.24%	0.00%	0.00%	97	48	53	16						214
	2012-2013 EOY	13.32%	52.58%	47.42%	0.00%	0.00%	68	34	58	34						194
	2013-2014 EOY	12.64%	51.28%	48.72%	0.00%	0.00%	48	32	48	28						156
Black	2008-2009 EOY	4.06%	59.32%	40.68%	0.00%	0.00%	17	18	20	4						59
	2009-2010 EOY	3.84%	48.21%	51.79%	0.00%	0.00%	18	9	15	14						56
	2010-2011 EOY	3.63%	78.95%	21.05%	0.00%	0.00%	26	19	10	2						57
	2011-2012 EOY	3.53%	67.86%	32.14%	0.00%	0.00%	28	10	8	10						56
	2012-2013 EOY	3.78%	52.73%	47.27%	0.00%	0.00%	19	10	20	6						55
	2013-2014 EOY	3.89%	50.00%	50.00%	0.00%	0.00%	16	8	18	6						48
Hispanic	2008-2009 EOY	4.82%	55.71%	44.29%	0.00%	0.00%	16	23	14	17						70
	2009-2010 EOY	5.08%	67.57%	32.43%	0.00%	0.00%	41	9	9	15						74
	2010-2011 EOY	5.73%	62.22%	37.78%	0.00%	0.00%	39	17	28	6						90
	2011-2012 EOY	7.06%	58.93%	41.07%	0.00%	0.00%	39	27	32	14						112
	2012-2013 EOY	7.01%	52.94%	47.06%	0.00%	0.00%	28	26	28	20						102
	2013-2014 EOY	10.13%	60.00%	40.00%	0.00%	0.00%	52	23	34	16						125
Multiracial	2008-2009 EOY	0.48%	100.00%	0.00%	0.00%	0.00%	4	3								7
	2009-2010 EOY	0.75%	63.64%	36.36%	0.00%	0.00%	3	4	4							11
	2010-2011 EOY	1.21%	84.21%	15.79%	0.00%	0.00%	8	8	2	1						19
	2011-2012 EOY	6.30%	56.00%	44.00%	0.00%	0.00%	34	22	35	9						100
	2012-2013 EOY	5.08%	50.00%	50.00%	0.00%	0.00%	21	16	22	15						74
	2013-2014 EOY	6.97%	53.49%	46.51%	0.00%	0.00%	26	20	27	13						86
Pacific Islander	2008-2009 EOY	0.34%	100.00%	0.00%	0.00%	0.00%	3	2								5
	2009-2010 EOY	0.27%	0.00%	100.00%	0.00%	0.00%			2	2						4
	2010-2011 EOY	0.25%	100.00%	0.00%	0.00%	0.00%	4									4
	2011-2012 EOY	0.32%	60.00%	40.00%	0.00%	0.00%	1	2	2							5
	2012-2013 EOY	1.17%	52.94%	47.06%	0.00%	0.00%	1	8	6	2						17
	2013-2014 EOY	0.97%	16.67%	83.33%	0.00%	0.00%	2		4	6						12
White	2008-2009 EOY	78.66%	61.94%	37.97%	0.09%	0.00%	426	282	266	168	1					1143
	2009-2010 EOY	75.91%	56.24%	43.76%	0.00%	0.00%	360	262	300	184						1106
	2010-2011 EOY	73.66%	62.78%	37.22%	0.00%	0.00%	434	293	278	153						1158
	2011-2012 EOY	69.06%	59.22%	40.78%	0.00%	0.00%	434	215	282	165						1096
	2012-2013 EOY	68.75%	58.64%	41.36%	0.00%	0.00%	303	284	288	126						1001
	2013-2014 EOY	64.10%	46.65%	53.35%	0.00%	0.00%	248	121	251	171						791
ALL Students	2008-2009 EOY	100.00%	60.84%	39.09%	0.07%	0.00%	884		568		1					1453
	2009-2010 EOY	100.00%	56.90%	43.10%	0.00%	0.00%	829		628		0					1457
	2010-2011 EOY	100.00%	62.72%	37.28%	0.00%	0.00%	986		586		0					1572
	2011-2012 EOY	100.00%	60.43%	39.57%	0.00%	0.00%	633	326	414	214						1587
	2012-2013 EOY	100.00%	56.87%	43.13%	0.00%	0.00%	444	384	422	206						1456
	2013-2014 EOY	100.00%	49.11%	50.89%	0.00%	0.00%	402	204	384	244						1234

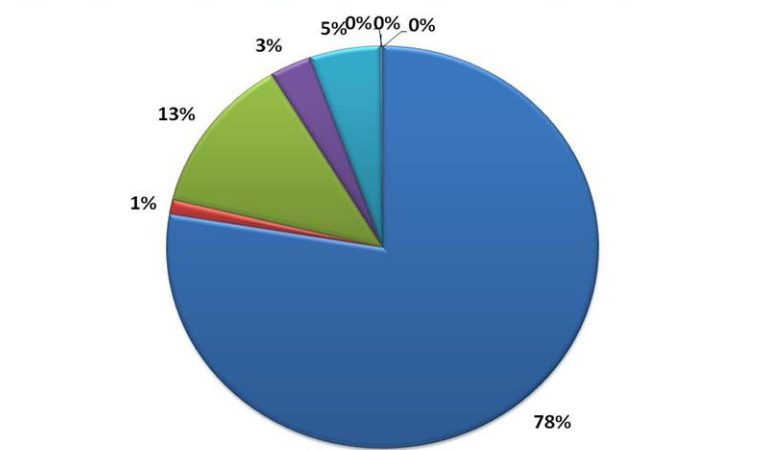


# Auburn School District High Advanced Placement 2013 - 2014 End of Year Report

		Total Percent of Enrollments	High School AP Courses*															
			Percent				Count											
							9		10		11		12		Total			
Grade 9	Grade 10	Grade 11	Grade 12	F	M	F	M	F	M	F	M							
Am Indian	2008-2009 EOY	1.15%	0.00%	7.14%	71.43%	21.43%			2		14	6	4	2	28			
	2009-2010 EOY	1.61%	0.00%	15.38%	10.26%	74.36%			4	2	4		22	7	39			
	2010-2011 EOY	1.08%	0.00%	14.29%	28.57%	57.14%			2	2	6	2	16		28			
	2011-2012 EOY	0.49%	0.00%	0.00%	50.00%	50.00%					7		4	3	14			
	2012-2013 EOY	0.35%	0.00%	20.00%	20.00%	60.00%				2	2		4	2	10			
	2013-2014 EOY	0.71%	26.67%	40.00%	13.33%	20.00%	8		6	6	2	2	6		30			
Asian	2008-2009 EOY	12.62%	0.00%	24.18%	29.08%	46.73%			38	36	56	33	83	60	306			
	2009-2010 EOY	12.72%	0.00%	24.68%	39.61%	35.71%			33	43	55	67	76	34	308			
	2010-2011 EOY	14.94%	0.00%	23.77%	38.24%	37.98%			58	34	65	83	70	77	387			
	2011-2012 EOY	14.56%	0.00%	21.20%	34.22%	44.58%			58	30	105	37	80	105	415			
	2012-2013 EOY	14.59%	0.97%	28.02%	34.54%	36.47%	4		74	42	86	57	111	40	414			
	2013-2014 EOY	12.95%	10.53%	16.33%	34.30%	38.84%	34	24	48	42	108	81	126	88	551			
Black	2008-2009 EOY	3.13%	0.00%	25.00%	57.89%	17.11%			17	2	26	18		13	76			
	2009-2010 EOY	4.09%	0.00%	13.13%	50.51%	36.36%			4	9	31	19	29	7	99			
	2010-2011 EOY	5.02%	0.00%	10.00%	34.62%	55.38%			9	4	21	24	36	36	130			
	2011-2012 EOY	2.49%	0.00%	12.68%	23.94%	63.38%			5	4	12	5	16	29	71			
	2012-2013 EOY	2.78%	0.00%	32.91%	37.97%	29.11%			18	8	20	10	16	7	79			
	2013-2014 EOY	4.75%	7.92%	13.86%	33.17%	45.05%	10	6	21	7	37	30	61	30	202			
Hispanic	2008-2009 EOY	5.28%	0.00%	21.88%	29.69%	48.44%			8	20	24	14	27	35	128			
	2009-2010 EOY	4.71%	0.00%	21.05%	45.61%	33.33%			9	15	26	26	26	12	114			
	2010-2011 EOY	5.25%	0.00%	28.68%	38.97%	32.35%			27	12	11	42	19	25	136			
	2011-2012 EOY	7.33%	0.00%	14.35%	53.59%	32.06%			20	10	73	39	17	50	209			
	2012-2013 EOY	10.19%	0.00%	16.61%	33.91%	49.48%			26	22	73	25	96	47	289			
	2013-2014 EOY	13.96%	11.45%	14.48%	39.06%	35.02%	45	23	46	40	127	105	123	85	594			
Multiracial	2008-2009 EOY	0.00%													0			
	2009-2010 EOY	0.17%	0.00%	100.00%	0.00%	0.00%				4					4			
	2010-2011 EOY	1.31%	0.00%	5.88%	82.35%	11.76%			2		14	14	4		34			
	2011-2012 EOY	6.07%	0.00%	26.59%	28.32%	45.09%			29	17	26	23	31	47	173			
	2012-2013 EOY	6.27%	0.00%	20.22%	42.13%	37.64%			18	18	55	20	37	30	178			
	2013-2014 EOY	8.32%	9.04%	13.56%	37.85%	39.55%	12	20	28	20	76	58	84	56	354			
Pacific Islander	2008-2009 EOY	0.00%													0			
	2009-2010 EOY	0.41%	0.00%	40.00%	0.00%	60.00%			2	2			2	4	10			
	2010-2011 EOY	0.27%	0.00%	0.00%	100.00%	0.00%					5	2			7			
	2011-2012 EOY	0.60%	0.00%	11.76%	23.53%	64.71%			2		4		5	6	17			
	2012-2013 EOY	0.67%	0.00%	31.58%	21.05%	47.37%			4	2	4		4	5	19			
	2013-2014 EOY	1.27%	7.41%	22.22%	44.44%	25.93%	4		6	6	14	10	14		54			
White	2008-2009 EOY	77.65%	0.00%	16.62%	39.67%	43.71%			181	132	447	300	493	330	1883			
	2009-2010 EOY	76.13%	0.00%	20.13%	35.32%	44.55%			212	159	357	294	473	348	1843			
	2010-2011 EOY	72.13%	0.00%	19.58%	40.61%	39.81%			197	169	470	289	380	364	1869			
	2011-2012 EOY	75.34%	0.10%	22.08%	34.84%	42.98%			2	213	218	346	334	514	1952			
	2012-2013 EOY	65.14%	0.00%	19.10%	38.47%	42.42%			232	121	395	316	414	370	1848			
	2013-2014 EOY	58.05%	12.23%	13.93%	32.15%	41.70%	185	117	186	158	492	302	586	444	2470			
ALL Students	2008-2009 EOY	100.00%	0.00%	17.98%	38.85%	43.18%			436		942		1047		2425			
	2009-2010 EOY	100.00%	0.00%	20.65%	36.31%	43.04%			500		879		1042		2421			
	2010-2011 EOY	100.00%	0.00%	19.92%	40.45%	39.64%			516		1048		1027		2591			
	2011-2012 EOY	100.00%	0.07%	21.26%	35.46%	43.21%			2	606		1011		1232	2851			
	2012-2013 EOY	100.00%	0.14%	20.69%	37.47%	41.70%	4		372	215	635	428	682	501	2837			
	2013-2014 EOY	100.00%	11.47%	14.57%	33.94%	40.02%	298	190	341	279	856	588	1000	703	4255			

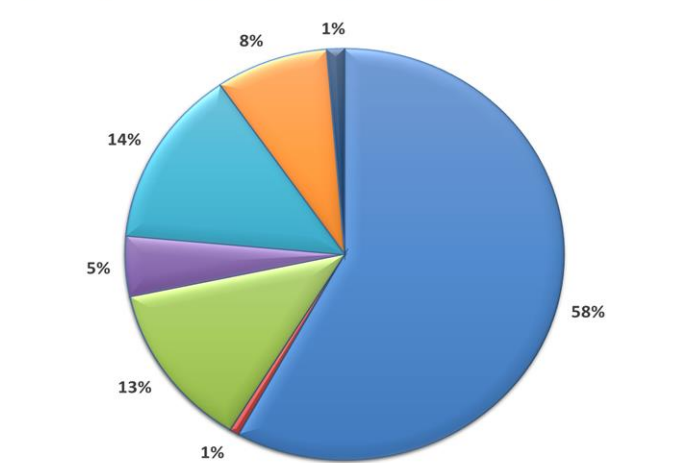
**2008-2009 Advanced Placement Course Enrollments**

White Am Indian Asian Black Hispanic Multiracial Other Pacific Islander



**2013-2014 Advanced Placement Course Enrollments**

White Amer Ind Asian Black Hispanic Multi-racial Pacific Islander



## 1. Certificated and Classified Personnel Report

Recommendation: That the board approve the attached report.

Attached is a revised salary schedule for the 2014-15 school year for the Non-represented Office Personnel. Dr. Herren, superintendent, will be available to answer any questions.

Recommendation: That the board approve the salary schedule.

# PERSONNEL REPORT - CERTIFICATED

	Classification	Job Type	Building	Name	Start Date	Hours	Rate of Pay	Comment
Curriculum-Noncurriculum								
	Certificated	Assessment design	MTB	Carnahan, Erin	6/23/2014	4	\$ 45.17	
	Certificated	Assessment design	RAIN	Diebag, James	6/23/2014	14	\$ 35.21	
	Certificated	Assessment design	RAIN	Dunham, Ryan	6/23/2014	4	\$ 45.17	
	Certificated	Assessment design	OLY	Englander, Brandy	6/23/2014	14	\$ 38.88	
	Certificated	Assessment design	CAS	Homfeldt, Steven	6/23/2014	4	\$ 50.93	
	Certificated	Assessment design	CAS	Killett, Casey	6/23/2014	14	\$ 39.45	
	Certificated	Assessment design	MTB	Nelson, Shari	6/23/2014	4	\$ 31.78	
	Certificated	Assessment design	OLY	Rogers, Laura Christie	6/23/2014	4	\$ 38.67	
	Certificated	Assessment design	MTB	Rogers, Stacey	6/23/2014	14	\$ 42.41	
	Certificated	Assessment design	RAIN	Todd, Kristin	6/23/2014	4	\$ 37.30	
	Certificated	ATLA sessions for 2014-15	AJ	Covey, Erica	9/3/2014	24	\$ 35.57	
	Certificated	AYES Intern monitoring	AHS	Donaldson, Fred	6/9/2014	45	\$ 45.82	
	Certificated	Camp Auburn	TP	DeFrancesco, Andrew	4/22/2014	10	Stipend \$409	
	Certificated	Camp Auburn	TP	Hanson, Marlene	4/22/2014	10	Stipend \$409	
	Certificated	Camp Auburn	TP	McIntyre, Leah	4/22/2014	10	Stipend \$409	
	Certificated	CCSS stems	ARHS	Diehl, Bruce	6/23/2014	6	\$ 50.93	
	Certificated	CCSS stems	ARHS	McKeehan, Patrick	6/23/2014	6	\$ 43.17	
	Certificated	CCSS stems	ARHS	Monsen, Andrew	6/23/2014	6	\$ 48.67	
	Certificated	CH elem tech restructure	CH	Signal, Michael	8/1/2014	30	\$ 34.57	
	Certificated	Common assessments	CAS	Agnew, Corrie	6/23/2014	12	\$ 29.59	
	Certificated	Common assessments	MTB	Buhr, Susan	6/23/2014	12	\$ 38.88	
	Certificated	Common assessments	MTB	Nelson, Shari	6/23/2014	12	\$ 31.78	
	Certificated	Common assessments	OLY	Rogers, Laura Christie	6/23/2014	12	\$ 38.67	
	Certificated	Common assessments	RAIN	Todd, Kristin	6/23/2014	12	\$ 37.30	
	Certificated	Completer Analysis	AHS	Pratt, Cindy	6/20/2014	30	\$ 50.93	
	Certificated	CTE Advisory Comm mtg	MTB	Cowan, Aaron	5/22/2014	3	\$ 35.27	
	Certificated	Curr dev for CTE STEM food svcs	CAS	Bryant, Valerie	6/20/2014	15	\$ 45.79	
	Certificated	Daily Problem Solving Prog	DS	Brooks, Amanda	9/1/2014	10	\$ 41.14	
	Certificated	Daily Problem Solving Prog	EH	Logan, Carolyn	9/1/2014	20	\$ 40.66	
	Certificated	Daily Problem Solving Prog	LLH	Swanson, Jennifer	9/1/2014	10	\$ 43.75	
	Certificated	Education reform support	WAHS	Johnson, Anna	9/4/2013	1	\$ 33.12	
	Certificated	Education reform support	WAHS	Laush Jr., Larry	9/4/2013	1	\$ 50.93	
	Certificated	Education reform support	WAHS	Vannice, Sandra	9/4/2013	1	\$ 44.47	
	Certificated	Education reform support	WAHS	Watson, Kenneth Gregory	9/4/2013	1	\$ 45.83	
	Certificated	ELA common core	ALP	Allen, Natalie	7/1/2014		Stipend \$150	
	Certificated	ELA common core	WA	Anderson, Katie	7/1/2014		Stipend \$150	
	Certificated	ELA common core	HZ	Anderson, Mary	7/1/2014		Stipend \$150	
	Certificated	ELA common core	ALP	Beckett, Maryellen	7/1/2014		Stipend \$150	
	Certificated	ELA common core	EH	Beers, Timothy	7/1/2014		Stipend \$150	
	Certificated	ELA common core	TP	Brunelle, Jeanette	7/1/2014		Stipend \$150	
	Certificated	ELA common core	PIO	Campbell, Linda	7/1/2014		Stipend \$150	
	Certificated	ELA common core	AJ	Castro, Jennifer	7/1/2014		Stipend \$150	
	Certificated	ELA common core	ALP	Chipps-Freeman, Suzan	7/1/2014		Stipend \$150	
	Certificated	ELA common core	PIO	Dailey, Christina	7/1/2014		Stipend \$150	
	Certificated	ELA common core	LH	Daniels, Treena	7/1/2014		Stipend \$150	

Certificated	ELA common core	LH	Fettig, Michael	7/1/2014		Stipend \$150
Certificated	ELA common core	GR	Fitzgerald, William Michael	7/1/2014		Stipend \$150
Certificated	ELA common core	AJ	Garrison, David	7/1/2014		Stipend \$150
Certificated	ELA common core	LLH	Gesell, Ruth	7/1/2014		Stipend \$150
Certificated	ELA common core	LV	Gwin, Brandi	7/1/2014		Stipend \$150
Certificated	ELA common core	TP	Hanson, Marlene	7/1/2014		Stipend \$150
Certificated	ELA common core	ALP	Harlor, Roxanne	7/1/2014		Stipend \$150
Certificated	ELA common core	AJ	Harris, Martin	7/1/2014		Stipend \$150
Certificated	ELA common core	LV	Haws, Jamie	7/1/2014		Stipend \$150
Certificated	ELA common core	CH	Hendricks, Jessica	7/1/2014		Stipend \$150
Certificated	ELA common core	IL	Hyde, Shannon	7/1/2014		Stipend \$150
Certificated	ELA common core	DS	Jones, Judith	7/1/2014		Stipend \$150
Certificated	ELA common core	AJ	Kemp, Brian	7/1/2014		Stipend \$150
Certificated	ELA common core	CH	Leir, Autumn	7/1/2014		Stipend \$150
Certificated	ELA common core	ALP	Leverton, Andrea	7/1/2014		Stipend \$150
Certificated	ELA common core	HZ	Lewis, Jocelyn	7/1/2014		Stipend \$150
Certificated	ELA common core	LLH	Libadia, Raphael	7/1/2014		Stipend \$150
Certificated	ELA common core	GR	Linville, Dianna	7/1/2014		Stipend \$150
Certificated	ELA common core	LLH	Luke, Dorothy	7/1/2014		Stipend \$150
Certificated	ELA common core	WA	Markwell, John	7/1/2014		Stipend \$150
Certificated	ELA common core	PIO	Mattioli, Steven	7/1/2014		Stipend \$150
Certificated	ELA common core	PIO	Mattox, Linda	7/1/2014		Stipend \$150
Certificated	ELA common core	CH	McCausland, Angela	7/1/2014		Stipend \$150
Certificated	ELA common core	ALP	Miller, Tana	7/1/2014		Stipend \$150
Certificated	ELA common core	WA	Monagin, Kelli	7/1/2014		Stipend \$150
Certificated	ELA common core	GR	Myers, Marty	7/1/2014		Stipend \$150
Certificated	ELA common core	IL	Myka, Tammy	7/1/2014		Stipend \$150
Certificated	ELA common core	GR	Pagoria-O'Neill, AnnMarie	7/1/2014		Stipend \$150
Certificated	ELA common core	EH	Parks, Pamela	7/1/2014		Stipend \$150
Certificated	ELA common core	WA	Paulson, Susan	7/1/2014		Stipend \$150
Certificated	ELA common core	DS	Riestra, Jennifer	7/1/2014		Stipend \$150
Certificated	ELA common core	LV	Rowe, Alesha	7/1/2014		Stipend \$150
Certificated	ELA common core	GR	Sellers, Kaitlyn	7/1/2014		Stipend \$150
Certificated	ELA common core	DS	Spears, Lindsay	7/1/2014		Stipend \$150
Certificated	ELA common core	IL	Sprenger, Peter	7/1/2014		Stipend \$150
Certificated	ESY	Annex	Fulton, Tara	7/7/2014	68	\$ 38.51
Certificated	ESY	Annex	Green, Beth	7/7/2014	10	\$ 48.68
Certificated	ESY	Annex	Hogg, Elaine	7/7/2014	68	\$ 50.93
Certificated	ESY	Annex	Lee, Aaron	7/7/2014	68	\$ 38.51
Certificated	ESY	DS	Mayer, Margaret	7/7/2014	68	\$ 50.93
Certificated	ESY	Annex	Woody, Lisa	7/7/2014	68	\$ 33.46
Certificated	ESY/home instruction	Annex	Bell, Sharon	6/23/2014	64	\$ 31.35
Certificated	ESY/home instruction	DS	Mayer, Margaret	7/7/2014	50	\$ 50.93
Certificated	ESY/home instruction	Annex	McCausland, Angela	6/23/2014	60	\$ 44.47
Certificated	ESY/therapy	Annex	Campbell, Julie	7/7/2014	16	\$ 44.92
Certificated	ESY/therapy	Annex	Frazier, Leslie	7/7/2014	75	\$ 45.83
Certificated	ESY/therapy	Annex	Jacobsma, Amanda	7/7/2014	25	\$ 37.52
Certificated	ESY/therapy	Annex	Senger, Candy	7/7/2014	50	\$ 27.02

Certificated	ESY-nursing services	Annex	Olson, Jill	6/23/2014	22	\$	50.93
Certificated	Extra hours	OLY	Campbell, Lorie	8/1/2013	21	\$	40.06
Certificated	Extra planning time	AMHS	Kartic, Samantha	6/1/2014	70	\$	27.73
Certificated	Flight and ELL student supp	OLY	Gerber, Seraphine	6/23/2014	10	\$	29.63
Certificated	Flight and ELL student supp	ARHS	Husar, Scott	6/23/2014	10	\$	48.77
Certificated	Flight and ELL student supp	ARHS	Raguzin-Holloman, Veronica	6/23/2014	10	\$	42.54
Certificated	Flight and ELL student supp	ARHS	Thomas, Bryant	6/23/2014	10	\$	43.17
Certificated	Flight and ELL student supp	ARHS	Yzaguirre, Noe Marcus	6/23/2014	10	\$	33.82
Certificated	HS math curr work	MTB	Carter, Jeremiah	6/23/2014	6	\$	40.06
Certificated	HS math curr work	ARHS	Earl, Thomas	6/23/2014	6	\$	36.37
Certificated	HS math curr work	ARHS	Rowe, Scott	6/23/2014	6	\$	48.77
Certificated	HS math curr work	ARHS	Saarenas, Robyn	6/23/2014	6	\$	50.93
Certificated	Involuntary room move	ALP	Allen, Natalie	6/19/2014	14	\$	27.39
Certificated	Involuntary room move	OLY	Bill Jr., Willard	6/1/2014	14	\$	41.14
Certificated	Involuntary room move	TP	Books, Stacey	6/23/2014	14	\$	30.78
Certificated	Involuntary room move	OLY	Butler, Mark	6/1/2014	14	\$	45.79
Certificated	Involuntary room move	CAS	Campbell, David	7/14/2014	14	\$	48.77
Certificated	Involuntary room move	TP	Cramer, Joan	6/23/2014	14	\$	45.79
Certificated	Involuntary room move	CAS	Deaver, Marcus	7/1/2014	14	\$	50.93
Certificated	Involuntary room move	CAS	Fonda, Paulette	7/1/2014	28	\$	32.51
Certificated	Involuntary room move	OLY	Guest, Joanna	6/1/2014	14	\$	30.11
Certificated	Involuntary room move	ALP	Harlor, Roxanne	6/19/2014	14	\$	33.62
Certificated	Involuntary room move	CAS	Jonasson, Karly	7/1/2014	14	\$	28.48
Certificated	Involuntary room move	TP	Kieswether, Linda	6/23/2014	14	\$	44.89
Certificated	Involuntary room move	ALP	Lancaster, Holly	6/19/2014	14	\$	48.77
Certificated	Involuntary room move	ALP	Laukala, Rachel	6/19/2014	14	\$	27.39
Certificated	Involuntary room move	CAS	Ludwigson, Mathew	7/1/2014	14	\$	30.39
Certificated	Involuntary room move	TP	Martin, Michael	6/23/2014	14	\$	38.88
Certificated	Involuntary room move	CAS	McNeese, Daniel	7/1/2014	14	\$	35.27
Certificated	Involuntary room move	OLY	Nomura, Daniel	6/1/2014	14	\$	50.93
Certificated	Involuntary room move	DS	Raines, Elizabeth	6/1/2014	14	\$	48.77
Certificated	Involuntary room move	OLY	Rogers, Laura Christie	6/1/2014	14	\$	33.67
Certificated	Involuntary room move	DS	Spears, Lindsay	6/1/2014	14	\$	33.82
Certificated	LAP support	AMHS	O'Brien, Leahmarie	1/6/2014	9	\$	44.47
Certificated	Lucky 7 Milestone	LV	Moore, Erika	4/29/2014	5.5	\$	40.66
Certificated	Lucky 7 Milestone	LLH	Schuman, Susan	4/29/2014	1.5	\$	49.93
Certificated	Lucky 7 Milestone	CH	Spring, Sarah	4/29/2014	5.5	\$	35.27
Certificated	Music session prep	GR	Churchill, Teri	6/23/2014	3	\$	50.93
Certificated	Music session prep	LH	Huo, Beverly	6/23/2014	3	\$	29.25
Certificated	Music session prep	TP	Spear, Hillary	6/23/2014	3	\$	37.30
Certificated	Native Amer Summer Prog	OLY	Bill Jr., Willard	7/7/2014	100	\$	41.14
Certificated	Next Generation Science	HZ	Lewis, Jocelyn	6/17/2014	1	\$	40.66
Certificated	Next Generation Science	LLH	Maloney, Kelly	6/17/2014	1	\$	37.49
Certificated	Novel Close Reading	RAIN	Astle, Erika	6/23/2014	26	\$	48.77
Certificated	Novel Close Reading	MTB	Carstens, Corrie	6/23/2014	26	\$	50.93
Certificated	Novel Close Reading	OLY	Clark, Lisa	6/23/2014	26	\$	49.93
Certificated	Novel Close Reading	CAS	Jonasson, Karly	6/23/2014	26	\$	28.48
Certificated	Novel Close Reading	OLY	Knudtson, Robyn	6/23/2014	26	\$	50.93

Certificated	Novel Close Reading	MTB	Koenig, Sally	6/23/2014	26	\$	37.00
Certificated	Novel Close Reading	CAS	Luettggen, Sandra	6/23/2014	26	\$	50.93
Certificated	Novel Close Reading	MTB	McCann, Vallery	6/23/2014	26	\$	37.74
Certificated	Participate in IEPs	ARHS	Cano, Jillian	6/24/2014	1.25	\$	35.21
Certificated	Participate in IEPs	ARHS	Moberg, Julie	6/24/2014	1	\$	50.93
Certificated	Participate in IEPs	ARHS	Raguzin-Holloman, Veronica	6/24/2014	1	\$	42.54
Certificated	Per AEA-case load overload pay	Annex	Cano, Jillian	6/30/2014	54	\$	35.21
Certificated	Per AEA-case load overload pay	Annex	Gallagher, Lindsey	6/30/2014	21	\$	44.47
Certificated	Per AEA-case load overload pay	Annex	George, Nicolas	6/30/2014	12	\$	37.74
Certificated	Per AEA-case load overload pay	Annex	Gibson-Myers, Elizabeth	6/30/2014	30	\$	44.47
Certificated	Per AEA-case load overload pay	Annex	Grimm, Dean	6/30/2014	12	\$	48.67
Certificated	Per AEA-case load overload pay	Annex	Jordan, Gary	6/30/2014	36	\$	50.93
Certificated	Per AEA-case load overload pay	Annex	Moenter, Lesley	6/30/2014	21	\$	41.90
Certificated	Perf Task classroom	OLY	Ball, Katherine	6/23/2014	21	\$	48.67
Certificated	Perf Task classroom	OLY	Clark, Lisa	6/23/2014		\$	49.93
Certificated	Perf Task classroom	OLY	Knudtson, Robyn	6/23/2014	21	\$	50.93
Certificated	Perf Task classroom	MTB	Koenig, Sally	6/23/2014		\$	37.00
Certificated	Perf Task classroom	MTB	McCann, Vallery	6/23/2014	21	\$	37.74
Certificated	Perf Task classroom	RAIN	McCord, Sheila	6/23/2014		\$	47.22
Certificated	Perf Task classroom	RAIN	Portmann, Kelly	6/23/2014		\$	48.77
Certificated	Perf Task classroom	CAS	Sleeth, Amy	6/23/2014	21	\$	35.91
Certificated	Perf Task classroom	RAIN	Snyder, Cheryl	6/23/2014	21	\$	47.81
Certificated	Perf Task classroom	CAS	Watkins, Kanika	6/23/2014	21	\$	47.81
Certificated	Perf Task classroom	OLY	Willson, Jennifer	6/23/2014	21	\$	50.93
Certificated	PreK GLAD lesson dev	IL	Abbott, Heidi	6/20/2014	30	\$	32.51
Certificated	PreK GLAD lesson dev	TP	Bulson, Laurie	6/20/2014	30	\$	43.75
Certificated	PreK GLAD lesson dev	GR	Carrizosa, Carla	6/20/2014	30	\$	38.67
Certificated	PreK GLAD lesson dev	AJ	Elliott, Naomi	6/20/2014	30	\$	41.27
Certificated	PreK GLAD lesson dev	LLH	Lamb, Peter	6/20/2014	30	\$	48.77
Certificated	PreK GLAD lesson dev	HZ	Sweetman, Joyce	6/20/2014	30	\$	30.39
Certificated	Race to Top implementation	DS	Couch, Adam	3/1/2014	10	\$	61.12
Certificated	School reform	LH	Beeksma, Stephanie	8/1/2014	4	\$	30.01
Certificated	School reform	LH	Foss, Kimberly	8/1/2014	4	\$	45.79
Certificated	School reform	LH	Gering, Trevor	8/1/2014	4	\$	27.02
Certificated	School reform	LH	Say-O'Donnell, Connie	8/1/2014	4	\$	45.79
Certificated	School reform	LH	Spear, Joann	8/1/2014	4	\$	50.93
Certificated	School reform	LH	Sweeney, Devan	8/1/2014	4	\$	44.47
Certificated	School reform/reading-math	AJ	Haechler, Molly	8/18/2014	6	\$	34.19
Certificated	School reform/reading-math	AJ	Nelson, Michelle D.	8/18/2014	6	\$	48.77
Certificated	Springboard Comp Passages	OLY	Clark, Lisa	6/23/2014	23	\$	49.93
Certificated	Springboard Comp Passages	MTB	Durham, Ann	6/23/2014	23	\$	50.93
Certificated	Springboard Comp Passages	RAIN	Espinosa, Michael	6/23/2014	23	\$	29.27
Certificated	Springboard Comp Passages	OLY	Gerber, Seraphine	6/23/2014	23	\$	29.63
Certificated	Springboard Comp Passages	RAIN	Green, Beth	6/23/2014	23	\$	48.67
Certificated	Springboard Comp Passages	MTB	Koenig, Sally	6/23/2014	23	\$	37.00
Certificated	Springboard Comp Passages	MTB	Lantz, Kathy	6/23/2014	23	\$	32.51
Certificated	Springboard Comp Passages	OLY	Mason, Jeri	6/23/2014	23	\$	45.79
Certificated	Springboard Comp Passages	CAS	Sleeth, Amy	6/23/2014	23	\$	35.91



Certificated	Springboard Comp Passages	MTB	Walker, Dena	6/23/2014	23	\$	50.93
Certificated	Springboard Comp Passages	CAS	Watkins, Kanika	6/23/2014	23	\$	47.81
Certificated	Standards alignment work	RAIN	Morgan, Julie	6/23/2014	20	\$	45.79
Certificated	Standards alignment work	CAS	Olson, Kevin	6/23/2014	20	\$	30.92
Certificated	Standards alignment work	CAS	Serame, Lori	6/23/2014	20	\$	50.93
Certificated	Standards alignment work	OLY	Willson, Jennifer	6/23/2014	20	\$	50.93
Certificated	Standards alignment work	MTB	Winter, Susan	6/23/2014	20	\$	45.79
Certificated	Stipend for on-call nurse	Annex	Olson, Jill	7/7/2014	1.25	Stipend	\$450
Certificated	Summer School	HZ	Scotfield, Carol	8/1/2014	16	\$	32.95
Certificated	Summer School	HZ	Scott, Erin	8/1/2014	16	\$	50.93
Certificated	Summer School Trng	GR	Carr, Karin	6/23/2014	1	\$	33.82
Certificated	Summer School Trng	PIO	Holbrook, Deanna	6/23/2014	2	\$	41.27
Certificated	Support students in reading	DSL	Campbell, Linda	7/10/2014	16	\$	50.93
Certificated	Support students in reading	DSL	Carroll, Leah	7/10/2014	75	\$	48.67
Certificated	Support students in reading	DSL	Ekstrom, Cory	7/10/2014	15	\$	30.77
Certificated	Support students in reading	DSL	Hagedorn, Barbara	7/10/2014	15	\$	50.93
Certificated	Support students in reading	DSL	Kelly, Amy	7/10/2014	15	\$	37.00
Certificated	Support students in reading	DSL	Knapp, Stephanie	7/10/2014	75	\$	40.66
Certificated	Support students in reading	DSL	Leir, Autumn	7/10/2014	16	\$	27.73
Certificated	Support students in reading	DSL	Logan, Carolyn	7/10/2014	65	\$	39.45
Certificated	Support students in reading	DSL	Rasmussen, Karine	7/10/2014	55	\$	43.84
Certificated	Support students in reading	DSL	Sellers, Kaitlyn	7/10/2014	16	\$	27.39
Certificated	Support students in writing	DSL	Carroll, Leah	7/10/2014	70	\$	48.67
Certificated	Support students in writing	DSL	Cicero, Tanya	7/10/2014	20	\$	50.93
Certificated	Support students in writing	DSL	Knapp, Stephanie	7/10/2014	50	\$	40.66
Certificated	Support to meet standard in reading/math	DSL	Hagedorn, Barbara	9/4/2013	100	\$	50.93
Certificated	Support to meet standard in reading/math	LV	Lockett, Sarah	9/4/2013	2	\$	29.63
Certificated	Support to meet standard in reading/math	LV	Stalmaster, Margaret	9/4/2013	12	\$	50.93
Certificated	Support to reach standard/writing	IL	Kelly, Amy	6/23/2014	12	\$	37.00
Certificated	Support to reach standard/writing	LLH	Knapp, Stephanie	6/23/2014	75	\$	40.66
Certificated	Teachers Growth Conf	AHS	Cockcroft, Elsbeth	7/8/2014	10	Stipend	\$150
Certificated	Teachers Growth Conf	ARHS	Malone, Corin	7/8/2014	10	Stipend	\$150
Certificated	Teachers Growth Conf	LV	Moore, Erika	7/8/2014	10	Stipend	\$150
Certificated	Teachers Growth Conf	AHS	Nurzhonov, Nuka	7/8/2014	10	Stipend	\$150
Certificated	Teachers Growth Conf	CAS	Watkins, Kanika	7/8/2014	10	Stipend	\$150
Certificated	Title 1 transition support	AJ	Beck, Thelma	7/8/2014	5	\$	50.93
Certificated	Title 1 transition support	LH	Butler, Regina	7/8/2014	5	\$	48.04
Certificated	Title 1 transition support	CAS	Dragseth, Paula	7/8/2014	5	\$	30.92
Certificated	Title 1 transition support	DSL	Hagedorn, Barbara	7/8/2014	15	\$	50.93
Certificated	Title 1 transition support	AMHS	O'Brien, Leahmarie	7/8/2014	5	\$	44.47
Certificated	Title 1 transition support	HZ	Scott, Erin	7/8/2014	5	\$	50.93
Certificated	Transition support	CAS	Dragseth, Paula	6/23/2014	40	\$	30.92
Certificated	Virtual extra hours	WAHS	Bosch, Michael	3/3/2014	26	\$	29.25
Certificated	Web design/format	LV	Moore, Erika	6/20/2014	28	\$	40.66
Certificated	Web design/format	LLH	Schuman, Susan	6/20/2014	28	\$	49.93
Certificated	Web design/format	CH	Spring, Sarah	6/20/2014	28	\$	35.27

	Certificated	Teacher/library (.6)	WA	Boe, Marci	9/3/2014	Child-rearing
<b>New Hire</b>						
	Certificated	Teacher/adaptive behavior (replacement)	AMHS	Jorgensen, Tyler	9/3/2014	
	Certificated	Teacher/Chinese	AHS	Clow, Lee	9/3/2014	
	Certificated	Teacher/lang. arts (replacement)	AMHS	Stenson, Kimberly	9/3/2014	
	Certificated	Teacher/science	RAIN	Olson, Thomas	9/3/2014	
	Certificated	Teacher/SLC	LV	Latawiec, Toni	9/3/2014	
	Certificated	Teacher/SLC	LV	Sheehan, Lori	9/3/2014	
	Certificated	Teacher/SLC (replacement)	CH	Kinney, Danielle	9/3/2014	
	Certificated	Teacher/SLC (replacement)	WA	Spaid, Rebecca	9/3/2014	
	Certificated	Teacher/social studies	AMHS	Rutledge, Cory	9/3/2014	
	Certificated	Teacher/social studies	CAS	Spry, Eric	9/3/2014	
	Certificated	Teacher/special ed	DS	Cole, Maggie	9/3/2014	
<b>Resignations</b>						
	Certificated	Teacher/ELL	OLY	Gerber, Seraphine	6/20/2014	Employment elsewhere
	Certificated	Teacher/robotics	OLY	Ferguson, Mark	7/23/2014	Employment elsewhere
	Certificated	Teacher/science	CAS	Pirone, Kenneth	7/20/2014	Employment elsewhere
	Certificated	Teacher/social studies	AMHS	Giola, Stephanie	6/20/2014	Employment elsewhere
	Certificated	Teacher/special ed	AJ	Bishop, Alie	6/19/2014	Employment elsewhere
	Certificated	Teacher/special ed	AMHS	Farley, Gregory	6/20/2014	Employment elsewhere

# PERSONNEL REPORT - CLASSIFIED

## Curriculum-Noncurriculum

Classified	Close reading	Dick Scobee	Carter, Diane	6/9/2014	4	\$16.61
Classified	Extra hours - Classroom move	Gildo Rey	Hizey, Nathan	6/2/2014	10	\$15.89
Classified	Extra hours - Health room	Auburn Mountainview	Libadia, Kelly	7/1/2014	48	\$16.61
Classified	Extra hours - Office move	Head Start	Benchley, Kelly	6/19/2014	3	\$15.74
Classified	Extra hours - Office move	Head Start	Burger, Susan	6/19/2014	18	\$18.89
Classified	Extra hours - Office move	Head Start	Keene, Jane	6/19/2014	18	\$19.06
Classified	Summer school - Head Start	Head Start	Abbe, Anjanette	7/7/2014	24	\$20.26
Classified	Summer school - Head Start	Head Start	Adams, Jennifer	7/7/2014	36	\$22.11
Classified	Summer school - Head Start	Head Start	Burger, Susan	7/7/2014	32	\$18.89
Classified	Summer school - Head Start	Head Start	Dowden-Hughes, Sherith	7/7/2014	36	\$23.46
Classified	Summer school - Head Start	Head Start	Hart, Kimberly	7/9/2014	50	\$16.91
Classified	Summer school - Head Start	Head Start	Kytan, Lynnette	7/7/2014	78	\$18.40
Classified	Summer school - Head Start	Head Start	Murphy, Jennifer	7/7/2014	30	\$20.62
Classified	Summer school - Head Start	Head Start	Reynolds, Alice	7/7/2014	9	\$16.51
Classified	Summer school - Head Start	Head Start	Romanets, Alla	7/7/2014	59	\$13.81
Classified	Summer school - Head Start	Head Start	Russum, Frances	7/7/2014	36	\$24.15
Classified	Summer school - LPN	Annex	Byerly, Julie	7/7/2014	50	\$22.93
Classified	Summer school - Para-Educator	Annex	Billingsly, Jaime	7/7/2014	50	\$15.89
Classified	Summer school - Para-Educator	Annex	Cash, Angela	7/7/2014	50	\$16.36
Classified	Summer school - Para-Educator	Annex	Chittenden, Amanda	7/7/2014	50	\$15.89
Classified	Summer school - Para-Educator	Annex	Cook, Claire	7/7/2014	50	\$16.20
Classified	Summer school - Para-Educator	Annex	Coon, Karen	7/7/2014	50	\$16.20
Classified	Summer school - Para-Educator	Annex	Dearinger, Dirk	7/7/2014	50	\$15.89
Classified	Summer school - Para-Educator	Annex	Farr, Brooks	7/7/2014	50	\$16.36
Classified	Summer school - Para-Educator	Annex	Garnica, Ebonie	7/7/2014	50	\$15.89
Classified	Summer school - Para-Educator	Annex	Hittle, Kelly	7/7/2014	50	\$15.89
Classified	Summer school - Para-Educator	Annex	Lim, Ines	7/7/2014	50	\$16.51
Classified	Summer school - Para-Educator	Annex	McMahon, Heather	7/7/2014	50	\$16.36
Classified	Summer school - Para-Educator	Annex	Mendez, Leticia	7/7/2014	50	\$16.20
Classified	Summer school - Para-Educator	Annex	Morris, Michelle	7/7/2014	50	\$16.51
Classified	Summer school - Para-Educator	Annex	Patterson, Deanna	7/7/2014	50	\$16.20
Classified	Summer school - Para-Educator	Annex	Peterson, Melody	7/7/2014	50	\$15.89
Classified	Summer school - Para-Educator	Annex	Polley, Kenna	7/7/2014	50	\$15.89
Classified	Summer school - Para-Educator	Annex	Potter, Allin	7/7/2014	50	\$15.89
Classified	Summer school - Para-Educator	Annex	Secrest, Amy L	7/7/2014	50	\$16.36
Classified	Training - HQ Secondary Para	Dept of Student Learning	Alexander, Mildred	6/4/2014	4	\$16.51
Classified	Training - HQ Secondary Para	Dept of Student Learning	Coates, Laine	6/4/2014	4	\$16.51
Classified	Training - HQ Secondary Para	Dept of Student Learning	Davidson, April	6/4/2014	4	\$16.91
Classified	Training - HQ Secondary Para	Dept of Student Learning	Flores, Susan	6/4/2014	4	\$16.21
Classified	Training - HQ Secondary Para	Dept of Student Learning	Gariano, Eletha	6/4/2014	4	\$16.61
Classified	Training - HQ Secondary Para	Dept of Student Learning	Hipol, Connie	6/4/2014	4	\$16.21
Classified	Training - HQ Secondary Para	Dept of Student Learning	McGrath, Angela	6/4/2014	4	\$16.36
Classified	Training - HQ Secondary Para	Dept of Student Learning	Menzel, Terry	6/4/2014	4	\$17.26

	Classified	Training - HQ Secondary Para	Dept of Student Learning	Perkovich, Diane	6/4/2014	4	\$16.51
	Classified	Training - HQ Secondary Para	Dept of Student Learning	Reynolds, Alice	6/4/2014	4	\$16.51
New Hire							
	Classified	Executive Director of Business Services	Administration	Dammell, Troy	7/28/2014		
Resignation							
Student							
Supervision							
	Classified	Referee	Hazelwood	Campbell, Murphy	1/7/2014		\$20.00

Auburn School District No. 408  
Auburn, Washington

**NON-REPRESENTED OFFICE PERSONNEL SALARY SCHEDULE  
EFFECTIVE SEPTEMBER 1, 2014**

	<b>Hourly Rate</b>
Deputy superintendent's secretary	\$31.00
Associate superintendent's secretary	\$31.00
Assistant superintendent's secretary	\$29.75

**NOTES:**

For longevity purposes, office personnel covered by this salary schedule will receive an additional 1% of their hourly rate beginning with their 15<sup>th</sup> year; 2% of their hourly rate beginning with their 20<sup>th</sup> year; and an additional 3% of their hourly rate beginning with their 25<sup>th</sup> year.

Vacation accrual will be subject to board policy.

Vacation accrual will be earned as follows: one (1) hour of vacation credit for each twelve (12) hours worked, not to exceed one hundred and sixty (160) hours per year.

All employees will be allowed hours of vacation credit based on hours worked during the calendar year September 1 through August 31.

In computing the total vacation credit for any period of service, part of an hour will be disregarded if less than one-half (1/2) hour; otherwise, it will be counted as a full hour.

All straight time hours for which an employee is paid (excluding vacation credit hours, holiday hours, and disability hours) will be counted as hours worked in the computation of vacation credit.

It is mutually agreed that vacations shall be scheduled at the request of the employee and approval of the supervisor, unless such vacation time would disrupt the normal activities of the District.

Stipends for PSP Certificates will be consistent with any other classified employee.

## CERTIFICATED RESUMES

a. Lee Clow--Chinese--Auburn High School

Mr. Clow earned his bachelor degree at the University of Washington.

Lee previously worked for the Edmonds School District.

b. Maggie Cole--special education--Dick Scobee Elementary

Ms. Cole earned her bachelor degree at Cleveland State University.

Maggie previously worked for the Federal Way School District.

c. Tyler Jorgensen--adaptive behavior--Auburn Mountainview High School

Mr. Jorgensen earned his bachelor degree at George Fox University.

Tyler completed his student teaching in the Renton School District in June, 2014.

d. Danielle Kinney--special education (SLC)--Chinook Elementary

Ms. Kinney earned her bachelor degree at the University of Washington.

Danielle completed her student teaching at Gildo Rey.

e. Toni Latawiec--special education (SLC)--Lake View Elementary

Ms. Latawiec earned her bachelor degree at the University of Washington.

Toni has been a para-educator in the Auburn School District.

f. Jon Morehead--math--Auburn High School

Mr. Morehead earned his bachelor degree at Pacific Lutheran University.

Jon has been a substitute in the Auburn School District.

g. Thomas Olson--science--Rainier Middle School

Mr. Olson earned his bachelor degree at Central Washington University.

Tom completed his student teaching in the Kent School District in June, 2014.

h. Cory Rutledge--social studies--Auburn Mountainview High School

Mr. Rutledge earned his bachelor degree at Central Washington University.

Cory has been a substitute in the Auburn School District.

i. Lori Sheehan--special education (SLC)--Lake View Elementary

Ms. Sheehan earned her bachelor degree at Grand Canyon University.

Lori has been a para-educator in the Auburn School District.

j. Rebecca Spaid--special education (SLC)--Washington Elementary

Ms. Spaid earned her bachelor degree at Central Washington University.

Rebecca has been a substitute in the Auburn School District.

k. Eric Spry--social studies--Cascade Middle School

Mr. Spry earned his bachelor degree at Washington State University.

Eric previously worked for the Fife School District.

l. Kimberly Stenson--language arts--Auburn Mountainview High School

Ms. Stenson earned her bachelor degree at Central Washington University.

Kim has been a substitute in the Auburn School District.

m. Christina Wooding--learning specialist (.5) and Native American specialist (.5)--Chinook Elementary

Ms. Wooding earned her bachelor degree at Pacific Lutheran University.

Christina has been a substitute in the Auburn School District.

## BUILDING PROGRAM

1. Evergreen Heights Elementary School Modernization Project

Attached are copies of Change Order Nos. 1 and 2 for the Evergreen Heights Elementary School Modernization project which should be considered to permit a change in the construction contract amount.

Original Contract	\$2,001,000.00
Previously Approved	0.00
Change Order No. 1	28,162.00
Change Order No. 2	+\$ 10,619.00
New Contract Amount	<u>\$2,039,781.00</u>

Jeffrey Grose, executive director of capital projects, will be present to recommend acceptance of these change orders.

Recommendation: That Change Order Nos. 1 and 2 be accepted for the Evergreen Heights Elementary School Modernization project and the contract amount be increased by \$38,781.00 for a new contract amount of \$2,039,781.00.

2. Auburn High School Network Integration Project

Attached is a copy of Change Order No. 3 for the Auburn High School Network Integration project which should be considered to permit a change in the construction contract amount.

Original Contract	\$595,532.98
Previously Approved	70,416.17
Change Order No. 3	-\$ 1,420.90
New Contract Amount	<u>\$664,528.25</u>

Jeffrey Grose will be present to recommend acceptance of this change order.

Recommendation: That Change Order No. 3 be accepted for the Auburn High School Network Integration project and the contract amount be decreased by \$1,420.90 for a new contract amount of \$664,528.25.

3. Auburn High School Modernization & Reconstruction Project

Attached are copies of Change Order Nos. 35 and 36 for the Auburn High School Modernization & Reconstruction project which should be considered to permit a change in the construction contract amount.

Original Contract	\$80,570,700.00
Previously Approved	1,376,932.00
Change Order No. 35	84,917.00
Change Order No. 36	+\$ 77,093.00
New Contract Amount	<u>\$82,109,642.00</u>



Jeffrey Grose will be present to recommend acceptance of these change orders.

Recommendation:

That Change Order Nos. 35 and 36 be accepted for the Auburn High School Modernization & Reconstruction project and the contract amount be increased by \$162,010.00 for a new contract amount of \$82,109,642.00.

4. Auburn High School--Work in Progress Report

Jeffrey Grose will be present to report on the progress of the Auburn High School Modernization & Reconstruction project.

# Change Order

---

PROJECT:	EVERGREEN HEIGHTS ELEMENTARY SCHOOL MODERNIZATION 5602 South 316th, Auburn, WA 98001	CHANGE ORDER NO.: 01 DATE: July 18, 2014
TO CONTRACTOR:	Jones and Roberts Company P.O. Box 1488 Olympia, WA 98507	CONTRACT DATED: May 15, 2014 ARCHITECT'S PROJECT NO.: 121-12022

The Contract is changed as follows:

Item 1: PR-007: Revise ductwork and relocate heating coils \$ 28,162.00

---

The original Contract Sum was	\$ 2,001,000.00
Net change by previously authorized Change Orders	\$ 0.00
The Contract Sum prior to this Change Order was	\$ 2,001,000.00
The Contract Sum will be <b>increased</b> / decreased / remain unchanged by this change order	\$ 28,162.00
The new Contract Sum including this Change Order will be	\$ 2,029,162.00

The Contract Time will be increased / decreased / **remain unchanged** by 0 days  
The date of Substantial Completion as of the date of this Change Order therefore is: Unchanged

NAC|Architecture  
2025 First Avenue, Suite 300  
Seattle, WA 98121

Auburn School District #408  
915 Fourth Street NE  
Auburn, WA 98002

Jones and Roberts Company  
P.O. Box 1488  
Olympia, WA 98507

By: 

Date: 7/18/14

By: \_\_\_\_\_

Date: \_\_\_\_\_

By: 

Date: 7/21/14

# Change Order

---

PROJECT: EVERGREEN HEIGHTS ELEMENTARY SCHOOL      CHANGE ORDER NO.: 02  
MODERNIZATION  
5602 South 316th, Auburn, WA 98001      DATE: July 18, 2014

TO CONTRACTOR: Jones and Roberts Company      CONTRACT DATED: May 15, 2014  
P.O. Box 1488  
Olympia, WA 98507      ARCHITECT'S PROJECT NO.: 121-12022

The Contract is changed as follows:

Item 1:	CCA-001:	Remove Concrete Walls @ Room 506	\$	1,132.00
Item 2:	CCA-005:	Add Stainless Steel Panels Around Edge of Kitchen Hood	\$	954.00
Item 3:	CCA-006:	Frame New Louver Opening on North Wall of Servery Room 513	\$	606.00
Item 4:	PR-003:	Remove and Reinstall Casework	\$	870.00
Item 5:	PR-004:	Change Shelf Clip Holes to KV Supports	\$	549.00
Item 6:	PR-005:	Revise Combi-Oven	\$	3,530.00
Item 7:	PR-010:	Remove Topping Slab at Rooms 101A, 103, 104	\$	2,722.00
Item 8:	PR-011:	HEPA Vac & Wet Wipe Water Heater PansRms 306, 312, 318	\$	256.00

---

The original Contract Sum was	\$	2,001,000.00
Net change by previously authorized Change Orders	\$	28,162.00
The Contract Sum prior to this Change Order was	\$	2,029,162.00
The Contract Sum will be <b>increased</b> / decreased / remain unchanged by this change order	\$	10,619.00
The new Contract Sum including this Change Order will be	\$	2,039,781.00

The Contract Time will be increased / decreased / **remain unchanged** by 0 days  
The date of Substantial Completion as of the date of this Change Order therefore is: Unchanged

NAC|Architecture  
2025 First Avenue, Suite 300  
Seattle, WA 98121

Auburn School District #408  
915 Fourth Street NE  
Auburn, WA 98002

Jones and Roberts Company  
P.O. Box 1488  
Olympia, WA 98507

By: 

By: \_\_\_\_\_

By: 

Date: 7/18/14

Date: \_\_\_\_\_

Date: 7/21/14

# Change Order

---

PROJECT:	Auburn High School Network Integration Project	CHANGE ORDER NO.:	003
		DATE:	7/21/2014
OWNER:	Auburn School District #408 915 Fourth Street NE Auburn, WA 98002	CONTRACT DATED:	9/20/2013
		ENGINEER'S PROJECT NO.:	10145.09
TO CONTRACTOR:	Ednetics, Inc. 971 South Clearwater Loop Post Falls, ID 83854	ENGINEER:	Hargis Engineers, Inc. 600 Stewart Street, Suite 1000 Seattle, WA 98101

---

The Contract is changed as follows:

1. CCA-07:	Provide substitution of Network Monitoring System.	DEDUCT	\$1,420.90
2. Contract Time Extension:	Add 21 calendar days for the Temporary Classrooms scope of work.	ADD	\$0.00
Total this Change Order:		DEDUCT	\$1,420.90

---

The original Contract Sum was	\$595,532.98
Net change by previously authorized Change Orders	\$70,416.17
The Contract Sum prior to this Change Order was	\$ 665,949.15
The Contract Sum will be <u>decreased</u> by this change order	\$1,420.90
The new Contract Sum including this Change Order will be	\$ 664,528.25

The Contract Time will be changed as noted above.

The date of Substantial Completion of the "Phase 2 - Temporary Classrooms" portion of the contract as of the date of this Change Order has been changed to August 22, 2014.

Hargis Engineers, Inc.  
600 Stewart Street, Suite 1000  
Seattle, WA 98101


Auburn School District #408  
915 Fourth Street NE  
Auburn, WA 98002

Ednetics, Inc.  
971 South Clearwater Loop  
Post Falls, ID 83854

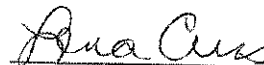
By: Paul Robaidek

By: Michael Newman

By: Lena Cress

  
Signature

\_\_\_\_\_  
Signature

  
Signature

Date: 7/22/14

Date: \_\_\_\_\_

Date: 7/23/14

# Change Order

PROJECT: AUBURN HIGH SCHOOL MODERNIZATIONS  
& RECONSTRUCTION

800 Fourth Street NE, Auburn, WA 98002

CHANGE ORDER NO.: 35

DATE: July 22, 2014

TO CONTRACTOR: Lydig Construction Company  
12800 Northup Way  
Bellevue, WA 98005

CONTRACT DATED: February 18, 2013

ARCHITECT'S PROJECT NO.: 121-10016

The Contract is changed as follows:

1. CCA-109	Modify masonry veneer ledger angles.	\$43,656.00
2. CCA-143	Modify ductwork at heat exchangers.	\$13,585.00
3. CCA-151	Modify hardware at doors 076B, 019C and 164B.	\$6,113.00
4. CCA-181	Provide mounting plates at ornamental gates.	\$826.00
5. CCA-190	Modify ceiling grid in Room 168.	\$624.00
6. CCA-219	Provide signage at Main Office and Attendance.	\$1,495.00
7. CCA-246	Provide residential appliances.	\$18,618.00
Total this Change Order		\$84,917.00

The original Contract Sum was	\$ 80,570,700.00
Net change by previously authorized Change Orders	\$ 1,376,932.00
The Contract Sum prior to this Change Order was	\$ 81,947,632.00
The Contract Sum will be increased by this change order	\$ 84,917.00
The new Contract Sum including this Change Order will be	\$ 82,032,549.00


The Contract Time will remain unchanged by 0 days  
The date of Substantial Completion as of the date of this Change Order therefore is July 1, 2016

Pursuant to the Contract, the execution of this Change Order constitutes a waiver of claims by the Contractor arising out of the Work to be performed or deleted pursuant to this Change Order, except as specifically described herein. Reservation of rights will be deemed waived and are void unless the reserved rights are specifically described in detail to the satisfaction of the Owner and are initialed by the Owner.

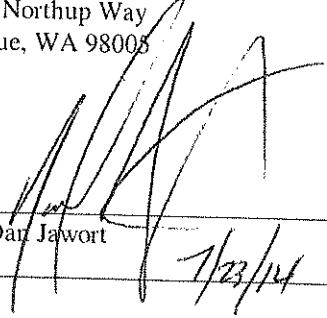
NACI Architecture  
2025 First Avenue, Suite 300  
Seattle, WA 98121

Auburn School District #408  
915 Fourth Street NE  
Auburn, WA 98002

Lydig Construction Company  
12100 Northup Way  
Bellevue, WA 98005

By:   
Brent Compton  
Date: July 22, 2014

By: \_\_\_\_\_  
Michael Newman  
Date: \_\_\_\_\_

By:   
Dan Jawort  
Date: 7/23/14

# Change Order

---

PROJECT:	AUBURN HIGH SCHOOL MODERNIZATIONS & RECONSTRUCTION 800 Fourth Street NE, Auburn, WA 98002	CHANGE ORDER NO.:	36
TO CONTRACTOR:	Lydig Construction Company 12800 Northup Way Bellevue, WA 98005	DATE:	July 21, 2014
		CONTRACT DATED:	February 18, 2013
		ARCHITECT'S PROJECT NO.:	121-10016

The Contract is changed as follows:

1. CCA-235	Modify location of Main Electrical Switchboard MSB#2.	\$77,093.00
Total this Change Order		\$77,093.00

---

The original Contract Sum was	\$	80,570,700.00
Net change by previously authorized Change Orders	\$	1,461,849.00
The Contract Sum prior to this Change Order was	\$	82,032,549.00
The Contract Sum will be increased by this change order	\$	77,093.00
The new Contract Sum including this Change Order will be	\$	82,109,642.00


The Contract Time will remain unchanged by 0 days  
The date of Substantial Completion as of the date of this Change Order therefore is July 1, 2016

Pursuant to the Contract, the execution of this Change Order constitutes a waiver of claims by the Contractor arising out of the Work to be performed or deleted pursuant to this Change Order, except as specifically described herein. Reservation of rights will be deemed waived and are void unless the reserved rights are specifically described in detail to the satisfaction of the Owner and are initialed by the Owner.


NAC|Architecture  
2025 First Avenue, Suite 300  
Seattle, WA 98121

Auburn School District #408  
915 Fourth Street NE  
Auburn, WA 98002

Lydig Construction Company  
12100 Northup Way  
Bellevue, WA 98005

By:   
Brent Compton  
Date: July 21, 2014

By: \_\_\_\_\_  
Michael Newman  
Date: \_\_\_\_\_

By:   
Dan Jawort  
Date: 7/22/14

FINANCE

1. Vouchers

Vouchers will be presented.

Recommendation:                      That these vouchers be signed.

2. Financial Statements

Financial statements for the month of June will be presented for the board's information.

The following vouchers, as audited and certified by the Auditing Officer as required by RCW 42.24.080, and those expense reimbursement claims certified as required by RCW 42.24.090, are approved for payment. Those payments have been recorded on this listing which has been made available to the board.

As of July 28, 2014, the board, by a \_\_\_\_\_ vote, approves payments, totaling \$2,534,482.58. The payments are further identified in this document.

Total by Payment Type for Cash Account, US Bank of Washington:  
Warrant Numbers 420359 through 420526, totaling \$2,534,482.58

Secretary _____	Board Member _____
Board Member _____	Board Member _____
Board Member _____	Board Member _____

Check Nbr	Vendor Name	Check Date	Check Amount
420359	*WEA- 001 (COBRA)	07/28/2014	12,141.05
420360	*WEA - 002 (COBRA)	07/28/2014	1,366.25
420361	*WEA - 004 (COBRA)	07/28/2014	93.75
420362	A T S AUTOMATION INC	07/28/2014	114.97
420363	A T S AUTOMATION INC	07/28/2014	689.85
420364	ACADEMY SCHOOLS	07/28/2014	1,243.75
420365	ADVANCE EDUCATION INC	07/28/2014	2,900.00
420366	AGRISHOP INC	07/28/2014	21.52
420367	ANTOYUK, SVETLANA	07/28/2014	48.00
420368	AUBURN RIVERSIDE HS CULINARY A	07/28/2014	675.00
420369	AUBURN SENIOR HIGH CULINARY AR	07/28/2014	1,437.50
420370	AUTOMATIONDIRECT.COM INC	07/28/2014	1,619.00
420371	AVER INFORMATION INC	07/28/2014	110.00
420372	BARGREEN ELLINGSON INC	07/28/2014	368.58
420373	BIGHORN ELECTRICAL SERVICES	07/28/2014	4,370.19
420374	BLUMENTHAL UNIFORMS & EQUIPMEN	07/28/2014	139.53
420375	BOWLER, DONNA LOU VON	07/28/2014	88.00



Check Nbr	Vendor Name	Check Date	Check Amount
420376	CASCIO- INTERSTATE MUSIC	07/28/2014	146.93
420377	CDW GOVERNMENT INC	07/28/2014	2,171.43
420378	CHILDRENS INSTITUTE FOR LEARNI	07/28/2014	14,892.00
420379	COASTWIDE LABORATORIES	07/28/2014	1,771.68
420380	COLLEGE BOARD	07/28/2014	26,900.00
420381	CONSOLIDATED ELECTRICAL DIST I	07/28/2014	6,942.68
420382	CONSOLIDATED PRESS PRINTING CO	07/28/2014	2,833.13
420383	CULTURES CONNECTING LLC	07/28/2014	540.00
420384	DAKTRONICS INC	07/28/2014	3,105.42
420385	DB SECURE SHRED	07/28/2014	134.34
420386	DE MONNIN'S ART STUDIO INC	07/28/2014	466.08
420387	DELTA ELECTRIC MOTORS INC	07/28/2014	750.05
420388	DEMCO INC	07/28/2014	315.98
420389	DEPT OF ENTERPRISE SERVICES	07/28/2014	350.00
420390	DESIGN AIR LTD	07/28/2014	1,679.39
420391	DINH, PHUC	07/28/2014	50.00
420392	Vendor Continued Check	07/28/2014	0.00
420393	Vendor Continued Check	07/28/2014	0.00
420394	DYNAMIC LANGUAGE CENTER INC	07/28/2014	2,846.76
420395	EASTBAY	07/28/2014	25,438.11
420396	ELECTROCOM	07/28/2014	547.50
420397	ELECTROCOM	07/28/2014	205.31
420398	EMPLOYEE RELATIONS NEGOTIATION	07/28/2014	990.00
420399	FEDERAL WAY SCHOOL DIST #210	07/28/2014	113,450.56
420400	FERRELLGAS	07/28/2014	96.03

Check Nbr	Vendor Name	Check Date	Check Amount
420401	FINE FAMILY LLC	07/28/2014	4,963.40
420402	FOLLETT SCHOOL SOLUTIONS INC	07/28/2014	639.69
420403	FRONTLINE PLACEMENT TECHNOLOGI	07/28/2014	595.00
420404	GALLEGOS, FAITH M	07/28/2014	40.00
420405	GAMETIME COMPANY	07/28/2014	75,841.81
420406	GEMMELL, JAMES L	07/28/2014	20.16
420407	GOODY MAN DISTRIBUTING INC	07/28/2014	436.29
420408	GOPHER SPORT	07/28/2014	369.10
420409	GRACIANO, FRANCISCA	07/28/2014	50.00
420410	GRAINGER DEPT 810392688	07/28/2014	1,165.71
420411	GUARDIAN SECURITY SYSTEMS INC	07/28/2014	49.87
420412	HA, LEIN	07/28/2014	50.00
420413	HEALTH VENTURE	07/28/2014	1,968.75
420414	HEFTA, JENNIFER	07/28/2014	734.70
420415	HERTZ EQUIPMENT RENTAL CORPORA	07/28/2014	164.10
420416	HOUGHTON MIFFLIN CO	07/28/2014	418.20
420417	HOWARD, SANDRA	07/28/2014	49.00
420418	JOSTENS INC	07/28/2014	9.50
420419	KING COUNTY DIRECTORS ASSN	07/28/2014	4,012.23
420420	KONICA MINOLTA BUSINESS SOLUTI	07/28/2014	4,017.54
420421	LANGUAGE CONNECTION LLC	07/28/2014	424.50
420422	LDG AV LLC	07/28/2014	5,282.48
420423	LEE, WINNIE	07/28/2014	50.00
420424	MACKIN EDUCATIONAL RESOURCES	07/28/2014	160.42
420425	MAXIM STAFFING SOLUTIONS	07/28/2014	544.92

Check Nbr	Vendor Name	Check Date	Check Amount
420426	Vendor Continued Check	07/28/2014	0.00
420427	MICRO COMPUTER SYSTEMS INC	07/28/2014	9,022.01
420428	MID AM RESEARCH CHEM CORP	07/28/2014	258.15
420429	MIDCO MATERIAL HANDLING INC	07/28/2014	702.51
420430	MILLER PAINT CO	07/28/2014	1,019.12
420431	MOSBY BROTHERS FARMS INC	07/28/2014	180.00
420432	MOTOR OIL SUPPLY INC	07/28/2014	1,862.93
420433	Vendor Continued Check	07/28/2014	0.00
420434	Vendor Continued Check	07/28/2014	0.00
420435	MUSIC & ARTS CENTER	07/28/2014	233.63
420436	NASCO MODESTO	07/28/2014	231.81
420437	NATIONAL SCHOOL BOARDS ASSN	07/28/2014	5,335.00
420438	NW SCHOOL HEARING FOR HEARING	07/28/2014	1,300.00
420439	OFFICE DEPOT INC ACCT#8011 073	07/28/2014	35.80
420440	ORCA PACIFIC INC	07/28/2014	389.26
420441	PAASCHE CONSTRUCTION INC	07/28/2014	1,584.47
420442	PACIFIC INTERPRETERS INC	07/28/2014	1,645.92
420443	PARKER PAINT MFG CO INC	07/28/2014	51.42
420444	PETRO CARD	07/28/2014	34,753.77
420445	PITNEY BOWES POSTAGE BY PHONE	07/28/2014	12,000.00
420446	PITNEY BOWES PRESORT SERVICES	07/28/2014	3,141.80
420447	PRAXAIR DISTRIBUTION INC	07/28/2014	145.88
420448	PREG O'DONNELL & GILLETT PLLC	07/28/2014	6,400.00
420449	PRO CARE THERAPY	07/28/2014	2,250.00
420450	PROFORCE MARKETING INC	07/28/2014	39.14

Check Nbr	Vendor Name	Check Date	Check Amount
420451	PUGET SOUND ENERGY ELECTRIC	07/28/2014	120,956.92
420452	Vendor Continued Check	07/28/2014	0.00
420453	PUGET SOUND ENERGY NAT GAS	07/28/2014	9,921.44
420454	PUGET SOUND EDUCATIONAL SERVIC	07/28/2014	13,167.00
420455	QUIGLEY, TED	07/28/2014	13.25
420456	REMEDIA PUBLICATIONS INC	07/28/2014	149.47
420457	RENAISSANCE LEARNING INC	07/28/2014	3,823.19
420458	REXEL INC	07/28/2014	418.21
420459	RIDDELL ALL AMERICAN SPORTS CO	07/28/2014	8,067.19
420460	ROCK CHIP GUYS LLC	07/28/2014	574.35
420461	SA PRODUCTS CO	07/28/2014	4,428.00
420462	SCHETKY NW SALES INC	07/28/2014	561.34
420463	SCHOLASTIC BOOK CLUBS INC	07/28/2014	1,470.53
420464	SCHOLASTIC CLASSROOM MAGAZINES	07/28/2014	1,054.41
420465	SCHOOL SPECIALTY INC	07/28/2014	209.32
420466	SHIFFLER EQUIPMENT SALES INC	07/28/2014	27.38
420467	SNYDERS PIANO SERVICE	07/28/2014	650.00
420468	SOUND ENERGY SYSTEMS	07/28/2014	1,306.25
420469	SPRAGUE ISRAEL GILES INC	07/28/2014	4,189.50
420470	Vendor Continued Check	07/28/2014	0.00
420471	STAPLES ADVANTAGE	07/28/2014	2,861.83
420472	STERLING GROUP DKI	07/28/2014	2,852.81
420473	STUMPEL, DELORES	07/28/2014	50.00
420474	SUPERIOR ENGINEERING SERVICES	07/28/2014	13,300.53
420475	SUPPLEMENTAL HEALTH CARE	07/28/2014	1,276.50

Check Nbr	Vendor Name	Check Date	Check Amount
420476	THERMAL SUPPLY INC	07/28/2014	66.35
420477	TRANE U S INC	07/28/2014	2,948.20
420478	TUFF SHED	07/28/2014	300.63
420479	UDE, LAWRENCE (LARRY)	07/28/2014	50.00
420480	UNIFIRST CORPORATION	07/28/2014	338.82
420481	UNIVERSAL LANGUAGE SERVICE INC	07/28/2014	39.00
420482	WALTER E NELSON COMPANY	07/28/2014	1,378.71
420483	WASH TRACTOR INC	07/28/2014	22.16
420484	WELCOME RAMP SYSTEMS INC	07/28/2014	7,188.56
420485	WESTERN BUS SALES	07/28/2014	89.97
420486	WICK, CRAIG	07/28/2014	50.00
420487	WILBUR ELLIS COMPANY	07/28/2014	1,960.07
420488	WORLD LANGUAGE SERVICES LLC	07/28/2014	518.60
420489	WSIPC NW ESD FISCAL AGENT	07/28/2014	27,648.25
420490	A T S AUTOMATION INC	07/28/2014	43,771.53
420491	CENTURY LINK	07/28/2014	510.09
420492	CLEAN HARBORS ENVIRONMENTAL SE	07/28/2014	4,459.77
420493	CREATIVE OFFICE	07/28/2014	86,572.89
420494	DELL MARKETING LP % DELL USA L	07/28/2014	59,826.39
420495	DENALI ADVANCED INTEGRATION	07/28/2014	984.41
420496	DEPT OF REVENUE LEASEHOLD TAX	07/28/2014	2,158.10
420497	DESIGN ELECTRIC INC	07/28/2014	829,276.29
420498	EDNETICS INC	07/28/2014	661,575.36
420499	LEVERAGE INFORMATION SYSTEMS I	07/28/2014	12,136.10
420500	MAGNATAG VISIBLE SYSTEMS	07/28/2014	1,393.29

Check Nbr	Vendor Name	Check Date	Check Amount
420501	MCKINNEY TRAILERS & CONTAINERS	07/28/2014	539.28
420502	MICRO COMPUTER SYSTEMS INC	07/28/2014	1,596.93
420503	NAC ARCHITECTURE INC	07/28/2014	153,583.06
420504	OAC SERVICES INC	07/28/2014	172.50
420505	SHANNON & WILSON INC	07/28/2014	570.94
420506	STAPLES ADVANTAGE	07/28/2014	143.43
420507	5TH AVENUE THEATRE ASSN	07/28/2014	81.00
420508	AUBURN SCHOOL DIST 408 **	07/28/2014	452.00
420509	AUBURN SCHOOL DIST 408 **	07/28/2014	4,777.70
420510	AUBURN SCHOOL DIST 408 **	07/28/2014	4,142.70
420511	AUBURN SCHOOL DIST 408 **	07/28/2014	3,225.00
420512	AUBURN SCHOOL DIST 408 **	07/28/2014	129.00
420513	BELLAIR CHARTERS	07/28/2014	3,912.44
420514	BUST A MOVE DJ	07/28/2014	600.00
420515	DEPIANO, DUSTIN	07/28/2014	427.88
420516	EASTBAY	07/28/2014	876.00
420517	FELICIANO, MARLENE	07/28/2014	120.00
420518	HENRY SCHEIN INC	07/28/2014	63.55
420519	LOWES HIW INC	07/28/2014	40.68
420520	MAKIN IT HAPPEN	07/28/2014	766.50
420521	MCCONKEY COMPANY	07/28/2014	181.35
420522	NW CASCADE INC	07/28/2014	249.00
420523	AUBURN SCHOOL DIST 408 **	07/28/2014	30.00
420524	AUBURN SCHOOL DIST 408 **	07/28/2014	1,918.37
420525	CALLEN, JOSHUA AND CAL POLY UN	07/28/2014	100.00

Check Nbr	Vendor Name	Check Date	Check Amount
420526	CALLEN, JOSHUA AND CAL POLY UN	07/28/2014	500.00
168	Computer	Check(s) For a Total of	2,534,482.58

0	Manual	Checks For a Total of	0.00
0	Wire Transfer	Checks For a Total of	0.00
0	ACH	Checks For a Total of	0.00
168	Computer	Checks For a Total of	2,534,482.58
Total For 168	Manual, Wire Tran, ACH & Computer	Checks	2,534,482.58
Less 0	Voided	Checks For a Total of	0.00
	Net Amount		2,534,482.58

## F U N D S U M M A R Y

Fund	Description	Balance Sheet	Revenue	Expense	Total
10	General Fund	24,407.82	588.25	627,622.98	652,619.05
20	Capital Projects	1,985.63	0.00	1,857,284.73	1,859,270.36
40	ASB Fund	-17.23	120.00	19,942.03	20,044.80
70	Private Purpose	0.00	0.00	2,548.37	2,548.37



The following vouchers, as audited and certified by the Auditing Officer as required by RCW 42.24.080, and those expense reimbursement claims certified as required by RCW 42.24.090, are approved for payment. Those payments have been recorded on this listing which has been made available to the board.

As of July 28, 2014, the board, by a \_\_\_\_\_ vote, approves payments, totaling \$88,052.89. The payments are further identified in this document.

Total by Payment Type for Cash Account, US Bank Wire Transfers:

Wire Transfer Payments 201300708 through 201300735, totaling \$88,052.89

Secretary _____	Board Member _____
Board Member _____	Board Member _____
Board Member _____	Board Member _____

Check Nbr	Vendor Name	Check Date	Check Amount
201300708	STAPLES ADVANTAGE	07/28/2014	5,842.40
201300709	UNITED PARCEL SERVICE	07/28/2014	114.34
201300720	FERGUSON ENTERPRISES INC #3007	07/28/2014	5,382.87
201300722	AAA FIRE & SAFETY INC	07/28/2014	1,854.93
201300723	LES SCHWAB TIRE CENTER	07/28/2014	179.63
201300726	WASH ASSN OF SCHOOL BUSINESS O	07/28/2014	1,990.00
201300727	AT & T	07/28/2014	194.74
201300728	CEDAR GROVE ORGANICS RECYCLING	07/28/2014	1,181.43
201300729	CENTURY LINK	07/28/2014	11,354.53
201300730	CENTURY LINK	07/28/2014	36,494.22
201300731	CITY OF AUBURN UTILITIES	07/28/2014	13,377.08
201300732	REPUBLIC SERVICES #176	07/28/2014	2,932.52
201300733	VERIZON WIRELESS	07/28/2014	0.94
201300734	WOLFGANG PUCK CATERING & EVENT	07/28/2014	4,557.41
201300735	KING COUNTY DIRECTORS ASSN	07/28/2014	2,595.85

15	Wire Transfer Check(s) For a Total of	88,052.89
----	---------------------------------------	-----------

0	Manual	Checks For a Total of	0.00
15	Wire Transfer	Checks For a Total of	88,052.89
0	ACH	Checks For a Total of	0.00
0	Computer	Checks For a Total of	0.00
Total For 15	Manual, Wire Tran, ACH & Computer	Checks	88,052.89
Less 0	Voided	Checks For a Total of	0.00
	Net Amount		88,052.89

## F U N D S U M M A R Y

Fund	Description	Balance Sheet	Revenue	Expense	Total
10	General Fund	1,603.61	0.00	81,891.87	83,495.48
40	ASB Fund	0.00	0.00	4,557.41	4,557.41

The following vouchers, as audited and certified by the Auditing Officer as required by RCW 42.24.080, and those expense reimbursement claims certified as required by RCW 42.24.090, are approved for payment. Those payments have been recorded on this listing which has been made available to the board.

As of July 28, 2014, the board, by a \_\_\_\_\_ vote, approves payments, totaling \$105,836.07. The payments are further identified in this document.

Total by Payment Type for Cash Account, AP Direct Dep Settlement Accou:  
ACH Numbers 131402622 through 131402669, totaling \$105,836.07

Secretary _____	Board Member _____
Board Member _____	Board Member _____
Board Member _____	Board Member _____

Check Nbr	Vendor Name	Check Date	Check Amount
131402622	AUBURN SCHOOL DIST REVOLVING F	07/28/2014	192.12
131402623	BARKER, CAROL JEAN	07/28/2014	87.84
131402624	BROWN, SARAH MARIE	07/28/2014	400.00
131402625	BURT, TIFFANY ANN	07/28/2014	20.83
131402626	CAMPBELL, LINDA SUSAN	07/28/2014	16.40
131402627	CLOUSER, JENNIFER LYNN	07/28/2014	2,500.00
131402628	COMSTOCK, BRADLEY JAMES	07/28/2014	470.00
131402629	COWAN, AARON ROBERT-JOHN	07/28/2014	299.13
131402630	CUMBERLAND THERAPY SERVICES LL	07/28/2014	1,020.00
131402631	DANIELS, DENISE CLARISE	07/28/2014	1,539.00
131402632	ECKELMAN, PATRICIA E	07/28/2014	109.50
131402633	EGBERT, JESSICA LYN	07/28/2014	160.00
131402634	FOOD SERVICES OF AMERICA	07/28/2014	1,358.59
131402635	FOOD SERVICES OF AMERICA *	07/28/2014	37,340.02
131402636	FOSTER, RYAN BRENT	07/28/2014	239.52
131402637	GAYMAN, MARY ANNE	07/28/2014	25.00
131402638	GUEST, JOANNA LYNN	07/28/2014	100.00

Check Nbr	Vendor Name	Check Date	Check Amount
131402639	HARMAN, EMILY NICHOLE	07/28/2014	34.94
131402640	HARRIS, MARTIN JENNINGS	07/28/2014	669.00
131402641	JACOBS, LORI DAWN	07/28/2014	268.31
131402642	JEFFREYS, BRENDAN THOMAS	07/28/2014	309.69
131402643	JONASSON, KARLY NICOLE	07/28/2014	199.00
131402644	KEEFE, REBECCA LYNN	07/28/2014	119.44
131402645	KIILSGAARD, LESLIE LOUISE	07/28/2014	141.03
131402646	LEWIS, PAUL M	07/28/2014	18.63
131402647	LORRAIN, KAY MICHAEL	07/28/2014	406.64
131402648	MASON, JERI LYNN	07/28/2014	85.00
131402649	MATTIOLI, STEVEN PAUL	07/28/2014	500.00
131402650	PFAB, TIMOTHY JOHN	07/28/2014	285.00
131402651	RAYBUCK, LEANNE MARGARET	07/28/2014	160.00
131402652	SAXON, JAN K	07/28/2014	43.51
131402653	SLEETH, AMY JO	07/28/2014	47.26
131402654	SUNBELT STAFFING LLC	07/28/2014	10,000.00
131402655	TANIGUCHI, ANGELA SUZANNE	07/28/2014	345.00
131402656	Vendor Continued Check	07/28/2014	0.00
131402657	US BANK CORP PAYMENT SYSTEMS P	07/28/2014	25,039.87
131402658	US BANK CORP PAYMENT SYSTEM TR	07/28/2014	11,016.82
131402659	US BANK CTE PCARDS	07/28/2014	103.92
131402660	WAY, LACEY ANNE	07/28/2014	100.00
131402661	WICKENS, JAMES C	07/28/2014	161.28
131402662	WILSON, NOLA RAE	07/28/2014	192.87
131402663	AUBURN SCHOOL DIST REVOLVING F	07/28/2014	490.56

Check Nbr	Vendor Name	Check Date	Check Amount
131402664	US BANK CORP PAYMENT SYSTEMS P	07/28/2014	820.14
131402665	AUBURN SCHOOL DIST REVOLVING F	07/28/2014	290.00
131402666	BUETOW, JENNIE M	07/28/2014	19.96
131402667	KEAGLE, STEPHANIE E	07/28/2014	38.37
131402668	US BANK CORP PAYMENT SYSTEMS P	07/28/2014	8,016.88
131402669	AUBURN SCHOOL DIST REVOLVING F	07/28/2014	35.00
48	ACH	Check(s) For a Total of	105,836.07

0	Manual	Checks For a Total of	0.00
0	Wire Transfer	Checks For a Total of	0.00
48	ACH	Checks For a Total of	105,836.07
0	Computer	Checks For a Total of	0.00
Total For 48	Manual, Wire Tran, ACH & Computer Checks		105,836.07
Less 0	Voided	Checks For a Total of	0.00
	Net Amount		105,836.07

## F U N D S U M M A R Y

Fund	Description	Balance Sheet	Revenue	Expense	Total
10	General Fund	70.42	0.00	96,054.74	96,125.16
20	Capital Projects	490.56	0.00	820.14	1,310.70
40	ASB Fund	290.00	0.00	8,075.21	8,365.21
70	Private Purpose	35.00	0.00	0.00	35.00

AUBURN SCHOOL DISTRICT NO. 408

FINANCIAL STATEMENTS  
FOR  
JUNE 2014

AUBURN SCHOOL DISTRICT NO. 408  
MONTHLY FINANCIAL REPORTS  
TABLE OF CONTENTS

- I. Combined Balance Sheet
  - A. Governmental Funds
  - B. Trust Funds and Account Groups
- II. Budget Status Reports
  - A. General Fund
  - B. Transportation Vehicle Fund
  - C. Capital Projects Fund
  - D. Debt Service Fund
  - E. ASB Fund
    - 1. High Schools
    - 2. Middle Schools
- III. Private Purpose Trust Fund Statement
- IV. NBN Employee Benefits Trust Fund Statement
- V. Local Grants



**AUBURN SCHOOL DISTRICT NO. 408**  
**BALANCE SHEETS - GOVERNMENTAL FUNDS**  
**June 30, 2014**

	GENERAL	TRANSPORT VEHICLE	CAPITAL PROJECTS	DEBT SERVICE	ASB
<b>ASSETS</b>					
Cash and cash equivalents	11,798,473	1,424,171	82,794,079	6,318,171	1,565,068
Restricted Cash	32,697	3,993	140,098	43,725	6,379
Property taxes receivable	16,061,255	14	2,259,648	8,758,335	
Accounts receivable	502,852				
Interest receivable					
Due from other funds	91,165				225
Due from other governments			51,943		
Inventory of supplies	402,720				
Prepays	14,756				
Total Assets	28,903,918	1,428,178	85,245,768	15,120,231	1,571,672
<b>LIABILITIES and EQUITY</b>					
Liabilities:					
Accounts payable	1,716,977		68,735		5,584
Estimated Unemployment Payable	7,065				
Due to other governments	15,593	1,864	65,423	20,523	2,994
Due to other funds	317		84,355		6,810
Deferred revenue	16,291,372	14	2,265,570	8,758,335	
Total Liabilities	18,031,324	1,878	2,484,083	8,778,858	15,388
Equity:					
Non Spendable Fund Bal--Inven	604,218				4,276
Restricted for Food Services	1,411,784				
Restricted from Bond Proceeds			10,045,953		
Restricted from Levy Proceeds			11,328,276		
Restricted from Impact Fees			2,144,053		
Restricted for Fund Purpose		1,415,645			1,552,008
Restricted to Debt Service				1,655,164	
Assigned to Contingencies	300,000				
Assigned to Other Purposes	1,800,000				
Assigned To Fund Purposes		10,655	59,243,403	4,686,209	
Unassigned Fund Balance	6,756,592				
Total Equity	10,872,594	1,426,300	82,761,685	6,341,373	1,556,284
Total Liabilities and Equity	28,903,918	1,428,178	85,245,768	15,120,231	1,571,672

**AUBURN SCHOOL DISTRICT NO. 408**  
**BALANCE SHEETS - TRUST FUNDS AND ACCOUNT GROUPS**  
**JUNE 30, 2014**

TRUST FUNDS		ACCOUNT GROUPS	
PRIV PURP TRUST	NBN EMPLOY BENEFITS	GENERAL FIXED ASSETS	GENERAL LONG-TERM DEBT

**ASSETS**

Cash and cash equivalents	547,316	97,138		
Restricted Cash	3,054	894		
Due From Other Funds		92		
Accounts receivable				
Interest receivable				
Fixed assets			367,670,076	
Other debits:				
Amount available in Debt Service Fund				6,341,373
Amount to be provided for retirement of general long-term obligations				127,565,649
Total Assets	550,370	98,124	367,670,076	133,907,022

**LIABILITIES and EQUITY**

Liabilities:

Accounts Payable				
Compensated absences payable				2,992,022
Due to other governments	1,428	418		
Due To Other Funds				
General obligation bonds payable				130,915,000
Total Liabilities	1,428	418	0	133,907,022

Equity:

Investment in general fixed assets			367,670,076	
Fund balances:				
Assigned To Fund Purposes	548,942	97,706		
Total Equity	548,942	97,706	367,670,076	0
Total Liabilities and Equity	550,370	98,124	367,670,076	133,907,022

Auburn School District No. 408  
General Fund Budget Status Summary

	REVENUE			EXPENDITURES			FUND BALANCE
Fiscal Year	Average	Actual	Actual	Average	Actual	Monthly	Beginning
2013-14	Cum %	Cum %	Monthly	Cum %	Cum %**	Amount	10,133,329
September	6.76%	6.51%	9,950,137	11.19%	11.15%	11,113,769	8,969,697
October	19.63%	20.36%	21,159,285	19.66%	19.15%	13,247,446	16,881,536
November	26.73%	27.23%	10,494,071	27.00%	26.90%	12,563,614	14,811,993
December	34.26%	34.39%	10,933,571	34.53%	34.40%	12,617,333	13,128,231
January	41.53%	41.28%	10,526,689	42.31%	41.97%	12,539,519	11,115,401
February	48.89%	48.60%	11,182,251	50.04%	49.91%	12,981,238	9,316,414
March	56.54%	56.29%	11,749,451	57.80%	57.60%	12,820,932	8,244,933
April	70.37%	71.31%	22,945,138	66.38%	65.65%	13,411,868	17,778,203
May	78.49%	79.14%	11,965,259	74.16%	73.50%	13,119,004	16,624,458
June	83.94%	84.41%	8,057,108	81.77%	82.10%	13,808,972	10,872,594
July	91.49%			89.63%			
August	100.07%			97.25%			

	Revenue	Expenditure	Fund Balance
Anticipated - First Budget	152,776,040	158,891,993	4,808,633

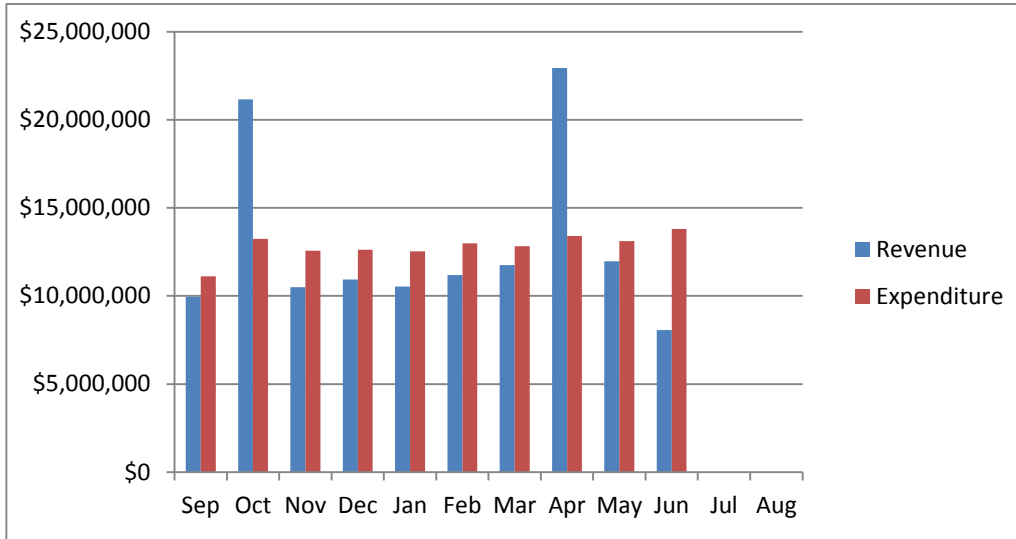
	REVENUE			EXPENDITURES			FUND BALANCE
Fiscal Year	Average	Actual	Actual	Average	Actual	Monthly	Beginning
2012-13	Cum %	Cum %	Monthly	Cum %	Cum %**	Amount	10,124,983
September	6.82%	6.42%	8,900,174	11.29%	11.34%	10,305,120	8,720,037
October	19.42%	20.17%	19,051,681	19.75%	19.60%	11,569,382	16,202,336
November	26.65%	27.71%	10,449,525	27.06%	27.23%	11,707,538	14,944,323
December	34.17%	34.95%	10,139,001	34.56%	34.82%	11,514,929	13,568,395
January	41.52%	41.78%	9,357,387	42.30%	42.71%	11,723,970	11,201,812
February	48.99%	48.59%	9,430,085	49.97%	50.23%	11,154,522	9,477,376
March	56.68%	56.00%	10,127,724	57.72%	58.12%	11,851,062	7,754,037
April	70.29%	70.42%	20,127,079	66.29%	65.91%	11,606,241	16,274,875
May	78.42%	79.73%	12,906,563	73.99%	74.22%	12,397,109	16,784,329
June	83.89%	84.80%	6,958,226	81.58%	82.21%	11,709,618	12,032,937
July	91.43%	92.10%	10,139,829	89.52%	90.51%	12,774,041	9,398,725
August	99.98%	101.04%	12,434,576	96.92%	97.78%	11,694,692	10,138,609

	Revenue	Expenditure	Fund Balance
Anticipated - First Budget	138,577,729	143,182,856	4,696,764
Actual - At Fiscal Year End	140,016,041	140,007,695	10,133,329

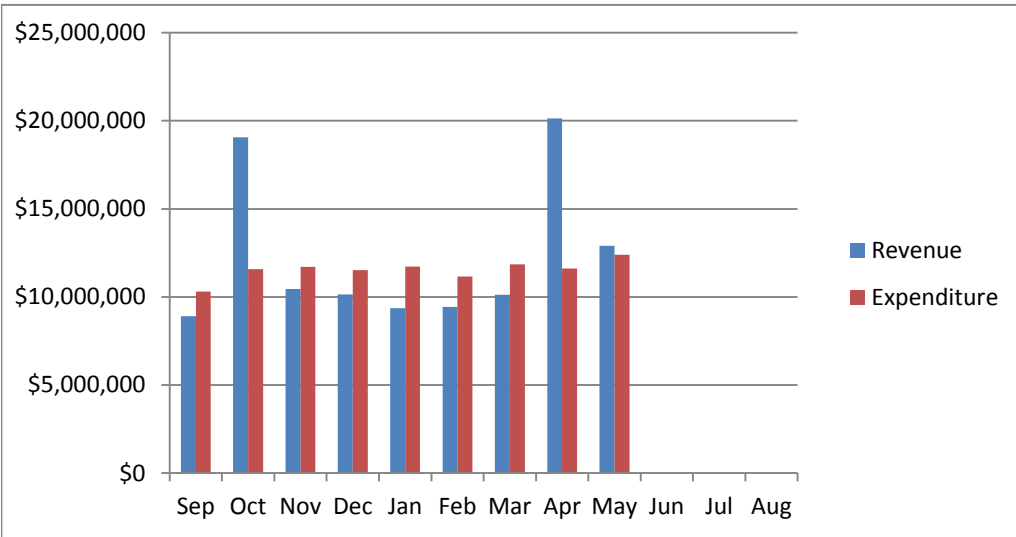
\*\* Includes encumbrances.

# AUBURN SCHOOL DISTRICT No. 408 GENERAL FUND

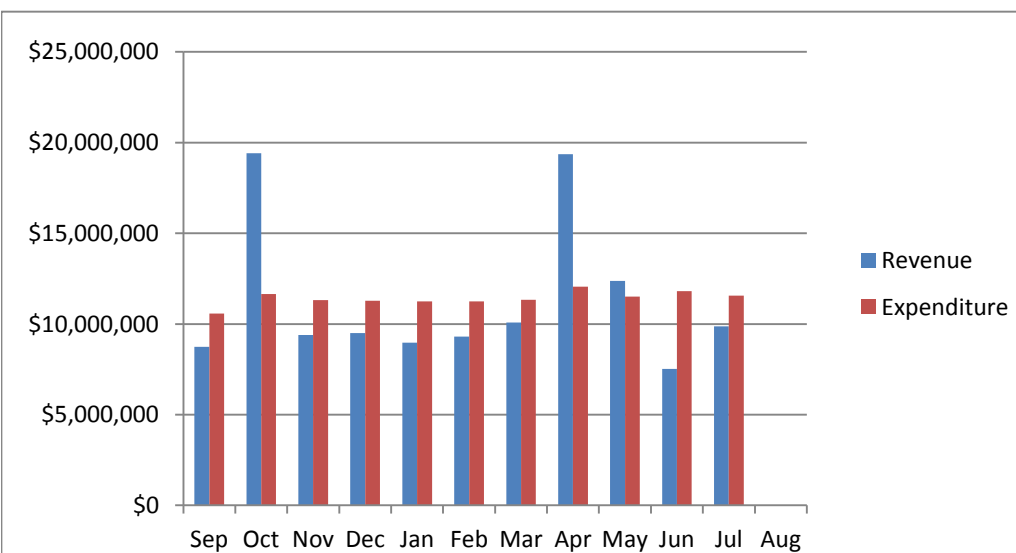
2013-14



2012-13



2011-12



**Auburn School District No. 408**  
**General Fund Budget Status**  
**For the Month of June, 2014**

	Annual Budget	Actual For Month	Total For Year	Encumbrance	Balance	Percent
TOTAL BEGINNING FUND BALANCE	\$ 10,924,586		10,133,329			
REVENUES AND OTHER FINANCING SOURCES						
1000 Local Taxes	31,544,148	243,405	31,380,025		164,123	99.48%
2000 Local Non-Tax	7,606,789	224,863	3,069,926		4,536,863	40.36%
3000 State, General Purpose	81,689,917	4,905,986	68,027,043		13,662,874	83.27%
4000 State, Special Purpose	17,225,647	1,286,213	15,679,317		1,546,330	91.02%
5000 Federal, General Purpose	126,302	-	8,481		117,821	6.71%
6000 Federal, Special Purpose	13,720,965	1,394,338	10,194,812		3,526,153	74.30%
7000 Revenues from Other District	759,572	-	516,447		243,125	67.99%
8000 Revenues from Other Agencies	102,700	-	84,607		18,093	82.38%
9000 Other Financing Sources	-	2,304	2,304		(2,304)	0.00%
Total Revenues & Other Finance Sources	152,776,040	8,057,108	128,962,960	-	23,813,080	84.41%
EXPENDITURES						
00 Regular Instruction	86,372,883	7,940,596	72,957,734	13,449,902	(34,753)	100.04%
10 Federal Stimulus	1,599,437	41,534	393,646	24,628	1,181,163	26.15%
20 Special Ed Instruction	18,511,370	1,608,450	15,598,080	2,969,455	(56,165)	100.30%
30 Vocational Instruction	6,407,646	544,750	5,041,896	994,186	371,564	94.20%
50&60 Compensatory Education	10,470,250	977,831	8,065,721	1,394,043	1,010,487	90.35%
70 Other Instructional Pgms	3,423,048	121,765	925,422	161,744	2,335,882	31.76%
80 Community Services	1,239,051	139,928	692,245	52,862	493,944	60.14%
90 Support Services	30,868,308	2,434,118	24,548,952	3,847,837	2,471,519	91.99%
Total Expenditures	158,891,993	13,808,972	128,223,695	22,894,657	7,773,641	95.11%
Excess Revenues/Other Financing Sources						
Over (under) Expend & Oth Financing Uses	(6,115,953)	(5,751,864)	739,265			
Total Ending Fund Balance	\$ 4,808,633		10,872,594			
Ending Fund Balance Accounts						
GL 821 Restricted for Carryovers						
GL 828 Restricted for Food Services	750,000		1,411,784			
GL 840 Nonspendable Fund Bal - Inv	750,000		604,218			
GL 875 Unrsrvd Dsgntd-Conting	800,000		300,000			
GL 888 Assigned to Other Purposes	2,508,633		1,800,000			
GL 890 UnRsrvd Undsgntd Fnd Bal			6,756,592			
Total Ending Fund Balance	\$ 4,808,633		\$ 10,872,594			

**Auburn School District No. 408**  
**Transportation Vehicle Fund Budget Status**  
**For the Month of June, 2014**

	Annual Budget	Actual For Month	Total For Year	Encumb	Balance	Percent
TOTAL BEGINNING FUND BALANCE	\$ 1,542,182		\$ 1,421,273			
REVENUES AND OTHER FINANCING SOURCES						
1000 Local Taxes		-	37		(37)	0.00%
2000 Local Non-Tax	17,049	808	4,990		12,059	29.27%
3000 State, General Purpose		-	-		-	0.00%
4000 State, Special Purpose	671,092	-	-		671,092	0.00%
5000 Federal, General Purpose		-	-		-	0.00%
8000 Revenues from Other Agencies		-	-		-	0.00%
9000 Others Financing Sources		-	-		-	
Total Revenues & Other Financing Sources	688,141	808	5,027	-	683,113	0.73%
EXPENDITURES						
Type 30 Equipment	1,559,231	-	-	-	1,559,231	0.00%
Total Expenditures	1,559,231	-	-	-	1,559,231	0.00%
Excess Revenues/Other Financing Sources Over (under) Expend & Oth Financing Uses	(871,090)	808	5,027			
Total Ending Fund Balance	\$ 671,092		\$ 1,426,300			
Ending Fund Balance Accounts						
GL 819 Restricted for Fund Purposes	671,092		1,415,645			
GL 889 Assigned to Special Fund Purposes			10,655			
GL 890 UnRsrvd Undsgntd Fnd Bal			-			
Total Ending Fund Balance	\$ 671,092		\$ 1,426,300			

**Auburn School District No. 408**  
**Capital Projects Fund Budget Status**  
**For the Month of June , 2014**

	Annual Budget	Actual For Month	Total For Year	Encumbrance	Balance	Percent
TOTAL BEGINNING FUND BALANCE	\$ 84,870,199		\$ 72,917,987			
REVENUES AND OTHER FINANCING SOURCES						
1000 Local Taxes	4,123,565	34,089	4,222,193		(98,628)	102.39%
2000 Local Non-Tax	2,095,588	173,290	2,076,392		19,196	99.08%
3000 State, General Purpose		-	-		-	0.00%
4000 State, Special Purpose		-	750,000		(750,000)	0.00%
5000 Federal, General Purpose		-	-		-	0.00%
6000 Federal, Special Purpose		-	-		-	0.00%
7000 Revenues from Other District		-	-		-	0.00%
8000 Revenues from Other Agencies		-	-		-	0.00%
9000 Other Financing Sources	30,000,000	-	45,207,358		(15,207,358)	0.00%
Total Revenues & Other Financing Sources	36,219,153	207,379	52,255,943	-	(16,036,790)	144.28%
EXPENDITURES						
10 Sites	18,678	(5,883)	(4,745)	-	23,423	-25.40%
20 Buildings	66,350,060	2,528,246	39,366,667	12,068,615	14,914,778	77.52%
30 Equipment	1,787,496	22,683	1,019,891	319,619	447,986	74.94%
40 Energy	2,650,000	8,098	2,030,432	534,768	84,800	0.00%
50 Sales & Lease Expenditures		-	-	-	-	0.00%
60 Bond Issuance Expenditures		-	-	-	-	0.00%
90 Debt		-	-	-	-	0.00%
Total Expenditures	70,806,234	2,553,145	42,412,246	12,923,002	15,470,986	78.15%
Excess Revenues/Other Financing Sources Over (under) Expend. & Oth Financing Uses	(34,587,081)	(2,345,766)	9,843,697			
Total Ending Fund Balance	\$ 50,283,118		\$ 82,761,685			
Ending Fund Balance Accounts						
GL 861 Restricted from Bond Proceeds	33,996,618		10,045,953			
GL 862 Restricted from Levy Proceeds			11,328,277			
GL 863 Restricted from State Proceeds	16,286,500					
GL 865 Restricted from Other Proceeds						
GL 866 Restricted from Impact Fees			2,144,053			
GL 889 Assigned to Fund Purpose			59,243,403			
GL 890 UnRsrvd Undsgntd Fnd Bal						
Total Ending Fund Balance	\$ 50,283,118		\$ 82,761,685			

**Auburn School District No. 408**  
**Debt Service Fund Budget Status**  
**For the Month of June, 2014**

	Annual Budget	Actual For Month	Total Year	Encumbrance	Balance	Percent
TOTAL BEGINNING FUND BALANCE	\$ 7,673,759		\$ 7,999,368			
REVENUES AND OTHER FINANCING SOURCES						
1000 Local Taxes	15,514,130	132,473	17,096,295		(1,582,165)	110.20%
2000 Local Non-Tax	59,746	5,419	22,420		37,326	37.53%
3000 State, General Purpose		-	-		-	0.00%
5000 Federal, General Purpose		-	-		-	0.00%
6000 Federal, Special Purpose		-	-		-	0.00%
9000 Other Financing Sources		-	3,592,638		(3,592,638)	100.00%
Total Revenues & Other Financing Sources	15,573,876	137,892	20,711,353		(5,137,477)	132.99%
EXPENDITURES						
Matured Bond Expenditures	12,780,000	2,015,000	12,780,000	-	-	100.00%
Interest on Bonds	7,003,528	3,149,859	6,002,836	-	1,000,692	85.71%
Interfund Loan Interest		-	-	-	-	0.00%
Bond Transfer Fees	100,000	-	9,943	-	90,057	9.94%
Arbitrage Rebate		-	-	-	-	0.00%
Underwriter's fees		-	12,118	-	(12,118)	0.00%
Total Expenditures	19,883,528	5,164,859	18,804,898	-	1,078,630	94.58%
Other Financing Uses		-	3,564,451			
Excess Revenues/Other Financing Sources Over (under) Expend. & Oth Financing Uses	(4,309,652)	(5,026,967)	(1,657,995)			
Total Ending Fund Balance	\$ 3,364,107		\$ 6,341,373			
Ending Fund Balance Accounts						
GL 810 Reserved For Other Items			-			
GL 830 Reserved For Debt Service	3,364,107		1,655,164			
GL 889 Assigned to Fund Purposes			4,686,209			
GL 890 UnRsrvd Undsgntd Fnd Bal			-			
Total Ending Fund Balance	\$ 3,364,107		\$ 6,341,373			



**Auburn School District No. 408**  
**ASB Fund Budget Status**  
**For the Month of June, 2014**

	Annual Budget	Actual For Month	Total for Year	Encumb	Balance	Percent
TOTAL BEGINNING FUND BALANCE	\$ 1,062,117		\$ 1,375,706			
REVENUES AND OTHER FINANCING SOURCES						
1000 General Student Body	1,733,300	38,080	670,642		1,062,658	38.69%
2000 Athletics	222,000	13,928	192,108		29,892	86.54%
3000 Classes	271,313	20,407	111,932		159,381	41.26%
4000 Clubs	1,754,674	169,321	1,143,682		610,992	65.18%
6000 Private Moneys	119,010	5,227	65,376		53,634	54.93%
Total Revenues & Other Financing Sources	4,100,297	246,963	2,183,740	-	1,916,557	53.26%
EXPENDITURES						
1000 General Student Body	1,347,240	61,829	490,391	19,048	837,801	37.81%
2000 Athletics	360,824	20,418	252,017	760	108,046	70.06%
3000 Classes	313,200	16,431	80,976	9,692	222,532	28.95%
4000 Clubs	1,936,196	158,357	1,122,805	17,624	795,768	58.90%
6000 Private Moneys	123,440	11,656	56,972	-	66,468	46.15%
Total Expenditures	4,080,900	268,692	2,003,161	47,124	2,030,614	50.24%
Excess Revenues/Other Financing Sources Over (under) Expend. & Oth Financing Uses	19,397	(21,729)	180,578			
Total Ending Fund Balance	\$ 1,081,514		\$ 1,556,284			
Ending Fund Balance Accounts						
GL 819 Restricted for Fund Purpose	1,081,514		1,552,008			
GL840 Nonspendable-Inven/Prepaid			4,276			
GL 889 Assigned to Fund Purposes						
Total Ending Fund Balance	\$ 1,081,514		\$ 1,556,284			

**AUBURN SCHOOL DISTRICT No. 408**  
**ASB FUND**  
**JUNE, 2014**

**HIGH SCHOOLS**

	<b>Auburn High</b>	<b>Auburn Mountainview</b>	<b>Auburn Riverside</b>	<b>West Auburn</b>	<b>TOTAL</b>
<b>BEGINNING BALANCE</b>	<b>\$ 227,479.76</b>	<b>\$ 269,683.87</b>	<b>\$ 311,412.02</b>	<b>\$ 9,970.79</b>	<b>\$ 818,546.44</b>
<b>REVENUES</b>	<b>\$ 502,361.64</b>	<b>\$ 576,038.75</b>	<b>\$ 572,830.39</b>	<b>\$ 2,279.51</b>	<b>\$ 1,653,510.29</b>
<b>EXPENDITURES</b>					
General	\$ 44,993.15	\$ 131,675.13	\$ 91,759.47	\$ 1,128.09	\$ 269,555.84
Athletics	112,949.27	45,849.07	59,644.57	-	218,442.91
Classes	21,079.77	17,800.49	17,786.08	-	56,666.34
Clubs	295,380.20	352,443.66	323,986.10	1,256.53	973,066.49
Private Monies	13,751.86	11,912.11	11,826.77	284.26	37,775.00
<b>TOTAL EXPENDITURES</b>	<b>\$ 488,154.25</b>	<b>\$ 559,680.46</b>	<b>\$ 505,002.99</b>	<b>\$ 2,668.88</b>	<b>\$ 1,555,506.58</b>
<b>TRANSFERS</b>					
General	\$ 64,713.45	\$ 37,960.37	\$ 41,697.00	\$ 500.00	\$ 144,870.82
Athletics	(36,973.40)	(12,278.42)	(8,285.00)	-	(57,536.82)
Classes	155.62	(1,132.41)	-	-	(976.79)
Clubs	(27,332.67)	(24,369.54)	(33,412.00)	(500.00)	(85,614.21)
Private Monies	(563.00)	(180.00)	-	-	(743.00)
<b>TOTAL TRANSFERS</b>	<b>\$ -</b>	<b>\$ -</b>	<b>\$ -</b>	<b>\$ -</b>	<b>\$ 0.00</b>
<b>OVER/ (UNDER)</b>	<b>\$ 14,207.39</b>	<b>\$ 16,358.29</b>	<b>\$ 67,827.40</b>	<b>\$ (389.37)</b>	<b>\$ 98,003.71</b>
<b>ENDING BALANCE</b>	<b>\$ 241,687.15</b>	<b>\$ 286,042.16</b>	<b>\$ 379,239.42</b>	<b>\$ 9,581.42</b>	<b>\$ 916,550.15</b>

## AUBURN SCHOOL DISTRICT No. 408

## ASB FUND

JUNE, 2014

MIDDLE SCHOOLS

	Cascade	Mt. Baker	Rainier	Olympic	TOTAL
<b>BEGINNING BALANCE</b>	<b>\$ 75,831.25</b>	<b>\$ 56,752.54</b>	<b>\$ 88,267.80</b>	<b>\$ 101,054.31</b>	<b>\$ 321,905.90</b>
<b>REVENUES</b>	<b>\$ 64,249.74</b>	<b>\$ 76,523.68</b>	<b>\$ 86,559.28</b>	<b>\$ 65,802.24</b>	<b>\$ 293,134.94</b>
<b>EXPENDITURES</b>					
General	\$ 30,731.15	\$ 11,370.66	\$ 11,292.75	\$ 20,766.50	\$ 74,161.06
Athletics	5,048.39	7,384.45	6,147.14	14,994.59	33,574.57
Classes	-	3,407.04	257.00	180.74	3,844.78
Clubs	28,760.13	41,629.85	56,587.80	20,601.13	147,578.91
Private Monies	4,503.98	3,716.30	1,038.57	3,722.64	12,981.49
<b>TOTAL EXPENDITURES</b>	<b>\$ 69,043.65</b>	<b>\$ 67,508.30</b>	<b>\$ 75,323.26</b>	<b>\$ 60,265.60</b>	<b>\$ 272,140.81</b>
<b>TRANSFERS</b>					
General	\$ 7,665.26	\$ 9,834.84	\$ 6,100.00	\$ 9,328.27	\$ 32,928.37
Athletics	(6,000.00)	(7,182.73)	(6,000.00)	(8,150.00)	(27,332.73)
Classes	-	(1,747.00)	-	(1,200.00)	(2,947.00)
Clubs	(1,665.26)	(905.11)	(100.00)	21.73	(2,648.64)
Private Monies	-	-	-	-	-
<b>TOTAL TRANSFERS</b>	<b>\$ 0.00</b>	<b>0.00</b>	<b>0.00</b>	<b>\$ 0.00</b>	<b>\$ (0.00)</b>
<b>OVER/ (UNDER)</b>	<b>\$ (4,793.91)</b>	<b>\$ 9,015.38</b>	<b>\$ 11,236.02</b>	<b>\$ 5,536.64</b>	<b>\$ 20,994.13</b>
<b>ENDING BALANCE</b>	<b>\$ 71,037.34</b>	<b>\$ 65,767.92</b>	<b>\$ 99,503.82</b>	<b>\$ 106,590.95</b>	<b>\$ 342,900.03</b>

AUBURN SCHOOL DISTRICT NO. 408  
PRIVATE PURPOSE TRUST FUND STATEMENT  
June 30, 2014

<b>REVENUES:</b>		
InvestED		\$ 15,070
Scholarship Donations:		
6405 AAOP	2,000	
6406 AAWP	800	
6407 AEA	1,500	
7005 AHS Booster Club	750	
6254 AHS Drama	2,075	
6041 AHS Foreman	10,000	
6107 AHS Hanan	3,153	
6018 AHS Jr Masonic	1,800	
6111 AHS K Strand	150	
6401 AHS Kiwanis	1,000	
6112 AHS S Leonard	350	
6119 AMHS Band	550	
6201 AMHS Booster	6,387	
7008 AMHS Booster Club	750	
6403 AMHS Kiwanis	1,000	
6039 AMHS Masonic	1,800	
6402 American Legion	400	
6202 ARHS Booster	4,500	
6118 ARHS DECA	449	
6038 ARHS Masonic	1,800	
7004 ARHS Win Wishes	1,159	
6016 Auburn Community	666	
6204 Auburn Noon Lions	2,000	
6084 Bonnie Olson	330	
6008 Burton/Moberg	1,000	
7009 Chinook Shoe Fund	1,377	
6003 Daan Ansingh	1,000	
6082 Dave Goethals	1,000	
6086 Don Standley	600	
7010 Food Bank	189	
6416 Gillman Robinson	600	
6076 Hirose Memorial	100	
6070 James Fugate	12	
6083 Juan Huseby	4,000	
6009 Judy Johnson	500	
6103 Linda Cowan	100	
6110 Marilyn Valent	2,000	
6412 Molen Ortho	1,500	
6114 Moly Serna	4,291	
6023 Optimist Scholarship	2,000	
6007 Pat Kuhlman	1,500	
6409 PEO Scholarship	900	
7003 Pioneer Shoe Fund	1,900	
6012 Prof Tech/Classified	2,400	
6410 PSEA	1,000	
6300 ROF Scholarship	200	
6024 Rotary	21,200	
6411 Surgical Association	1,500	
7007 Thunderbird Fund	4,000	
6108 Trimble Scholarship	1,500	
6088 Volney Wolters	1,700	
6414 WAHS Bus Barn	1,000	
6085 Walker Mens	1,000	
6089 Watt Memorial	500	
Total Scholarship Donations		105,936
Interest		2,162
Total Revenues		<u>123,100</u>
<b>EXPENDITURES:</b>		
InvestED	15,781	
6405 AAOP	1,800	
6406 AAWP	600	
6407 AEA	1,500	
6079 AHS Alumni	2,000	
7005 AHS Booster Club	5,499	
6120 AHS DECA	500	
6107 AHS Hanan	2,500	
6018 AHS Jr Masonic	1,800	
6111 AHS K Strand	150	
6401 AHS Kiwanis	1,000	
6008 AHS Kovacevich	400	
6254 AHS Profit Scholarship	500	
6112 AHS S Leonard	350	
6017 AHS Viscom	250	
6027 Alta Shoemaker	1,800	
6402 American Legion	400	
6119 AMHS Band	550	
6201 AMHS Booster	7,500	
6099 AMHS Cheer	1,000	
6100 AMHS Drama	1,100	
6403 AMHS Kiwanis	1,000	
6039 AMHS Masonic	1,800	
6202 ARHS Booster	4,500	
6117 ARHS Cheer	1,298	
6118 ARHS DECA	500	
6038 ARHS Masonic	1,800	
7004 ARHS Win Wishes	1,302	
6016 Auburn Community	2,700	
6204 Auburn Noon Lions	1,900	
6020 Auburn Womens Aux	3,000	
6050 Boeing Employees	300	
6084 Bonnie Olson	500	
6008 Burton/Moberg	1,000	
7009 Chinook Shoes	399	
6105 Culinary Arts	5,000	
6003 Daan Ansingh	1,100	
6006 Dan Benedett	300	
6082 Dave Goethals	1,000	
6087 Diamond In The Rough	1,000	
6015 Dick Scobee Memorial	2,000	
6071 Earl Price Memorial	500	
7010 Food Bank	189	
6416 Gillman Robinson	600	
6076 Hirose Memorial	250	
6070 James Fugate	1,000	
6080 Jill Wilton	12,500	
6083 Juan Huseby	4,000	
6009 Judy Johnston	1,000	
6103 Linda Cowan	500	
6004 Ludviksen Memoial	250	
6110 Marilyn Valent	1,000	
6014 Michael Jackson	500	
6412 Molen Ortho	1,500	
6002 Mollie Todd	1,000	
6114 Moly Serna	1,000	
7006 Native Am Students	18,714	
6023 Optimists	2,000	
6007 Pat Kuhlman	600	
6409 PEO Scholarship	900	
7003 Pioneer Shoe Fund	1,444	
6012 Prof Tech/Classified	2,800	
6410 PSEA	1,000	
6024 Rotary	14,700	
6411 Surgical Assoc	1,500	
7007 Thunderbird Fund	3,532	
6026 Trapper	2,000	
6108 Trimble	1,500	
6088 Volney Wolters	1,500	
6414 WAHS Bus Barn	1,000	
6025 WAHS Willey	500	
6085 Walker Mens	1,000	
6089 Watt Memorial	700	
Total Expenditures		<u>160,550</u>
Excess of Revenue over (under) Expenditure		-37,381
Fund Balance - Beginning of the Year		<u>586,323</u>
Fund Balance - Year to Date		<u>\$ 548,942</u>

**AUBURN SCHOOL DISTRICT NO 408**  
**NBN Employee Benefits Trust Fund Statement**  
**June 30, 2014**

**ADDITIONS:**

Contributions from Plan Members	\$ 223,050.25
Investment Earnings	<u>176.13</u>
Total Additions	<u>223,226.38</u>

**DEDUCTIONS:**

Benefits Claims	169,318.48
State Program Fees	<u>350.00</u>
Total Deductions	<u>169,668.48</u>

**NET DEDUCTIONS**

53,557.90

Net Assets at Beginning of Year	<u>44,148.14</u>
---------------------------------	------------------

Net Assets Year To Date	<u><u>\$ 97,706.04</u></u>
-------------------------	----------------------------

**AUBURN SCHOOL DISTRICT NO. 408**  
**Local Grants Received in June, 2014**

Donor	Recipient	Amount
Access Computer	Alpac	\$11.43
Bob Dale	Lake View	\$115.00
Coca Cola	Alpac	\$32.69
Communities In School	Cascade	\$1,341.89
Communities In School	Dick Scobee	\$1,361.08
Communities In School	Gildo Rey	\$1,343.95
Communities In School	Terminal Park	\$1,419.60
Escript	ARHS	\$2.07
Muckleshoots	ASD	\$4,086.55
Muckleshoots	Olympic	\$1,500.00
Pitchard	Cascade	\$1,500.00
PTA	Alpac	\$2,824.00
Sellers & Sandland	Gildo Rey	\$100.00
Student Paths	AHS	\$129.00
Target	Mt Baker	\$28.57
WESTAT	Lakeland Hills	\$200.00
Total		<u><u>\$15,995.83</u></u>

## 1. Approval of Minutes

Recommendation: That the minutes be approved.

### 3. Discussion

- ## 4. Executive Session

AUBURN SCHOOL DISTRICT NO. 408  
915 Fourth Street Northeast  
Auburn, Washington 98002-4452  
253-931-4914

GUIDE TO ADMINISTRATIVE SERVICES  
2014-15

Board of Directors  
|  
Superintendent  
|

